

Fitting types



Plate
(Top plate)

The castors are fitted to any equipment with a flat base by means of bolts and nuts. The bolt hole spacings are standardised.

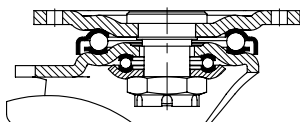
Plate fittings are available for swivel and fixed castors and used for light duty, transport equipment and heavy duty castors.

For castors with directional lock the shorter side of the top plate has to be aligned in driving direction.

The following dimensions have to be considered when selecting plate fittings:

- Plate size (external dimension)
- Bolt hole spacing
- Bolt hole \varnothing

Top plate drawings with external dimensions and bolt hole spacings: Refer to page 76-79.



Bolt hole

With bolt hole fittings, a connection element (e.g. a bolt) is pushed through the bolt hole of the swivel head. Levelling castors consist of a bolt hole with internal thread and the connection element is screwed into the central kingpin of the swivel bracket from the side of the equipment.

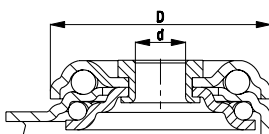
The load capacities indicated are only attained if the entire diameter of the top plate of the swivel castor is in contact with the appliance or equipment.

This type of fitting does not offer a positive location fit and therefore reduces the load capacity of the swivel head locking.

The fitting of the castor is cost effective as only a bolt (ideally in acc. to DIN 912) is necessary. This type of fitting is mainly used for light duty and transport equipment castors.

The following dimensions have to be considered when selecting bolt hole fittings:

- Plate \varnothing (external dimension) (D)
- Bolt hole \varnothing (d)



Steel plug-in stem

The castors are fitted by means of a plug-in stem which can be inserted into a corresponding tube or hole and secured in place. The stem is firmly connected to the castor and can be secured against turning or loosening by means of a fixing bolt (cross hole).

For castors with directional lock the fixing hole position has to be aligned at right angle to the driving direction.

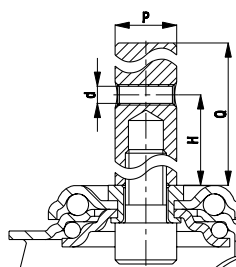
The load capacities indicated are only attained if the entire diameter of the top plate of the swivel castor is in contact with the appliance or equipment.

Stem fittings are mainly used for light duty and transport equipment castors.

Stainless steel plug-in stems are available for stainless steel swivel castors.

The following dimensions have to be considered when selecting plug-in stem fittings:

- Stem \varnothing (P)
- Stem length (Q)
- Position retaining hole if available (H)
- \varnothing retaining hole if available (d)



Threaded pin

(Product code suffix: -GS...)

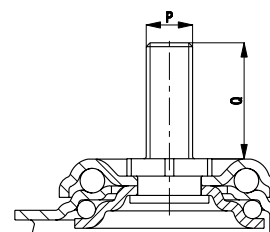
The castors are fitted to the transport unit by means of a threaded pin which is tightened to a thread or a cylindrical hole and a nut.

Threaded pin fittings are mainly used for light duty castors.

Stainless steel threaded pins (-GSX...) are available for synthetic corrosion-resistant swivel castors.

The following dimensions have to be considered when selecting threaded pin fittings:

- Threaded pin \varnothing (P)
- Length of the threaded pin (protrusion from the castor) (Q)



Fitting types



Plug-in pin

(Product code suffix: -ES)

The castors are fitted by means of plug-in pins which are inserted into an accommodating tube or hole by means of synthetic castor sockets.

The plug-in pin is firmly connected with the castor. A spring ring secures the swivel castor against loosening.

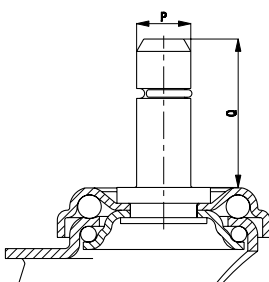
This fitting does not have an anti-twist lock therefore a swivel head locking is not effective.

With plug-in pin fittings, the castors can be quickly and cost effectively fitted to equipment.

Plug-in pin fittings are mainly used for light duty castors.

The following dimensions have to be considered when selecting plug-in pin fittings:

- Plug-in pin \varnothing (P)
- Length of the plug-in pin (Q)



Synthetic castor sockets for round tubes

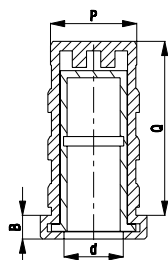
(Product code: RHR...)

Synthetic castor sockets are adapters which reduce the internal diameter of tubes to the plug-in pin's diameter. The synthetic castor socket is pressed or driven into the accommodating recess (round tube).

Then, the swivel castor is inserted into the castor socket by means of a plug-in pin.

The following dimensions have to be considered when selecting synthetic castor sockets:

- Internal tube \varnothing (P)
- Plug-in pin \varnothing (d)
- Fitting length (Q)
- Flange length (B)



Metal expander

(Product code suffix: -E...)

The castors are fitted by means of a metal expander which is inserted into a hole or a round or square tube. When screwing the bolt, the wedges are expanded and firmly pressed against the inner tube wall. The tightening torque should be max. 50 Nm. With reduced loads, the torque can be reduced to 16 Nm for thin-walled tubes.

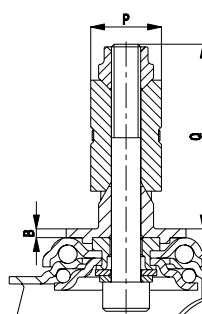
A hexagon socket on the underside prevents the expander turning in the fitting tube and any uncontrolled loosening.

Metal expander fittings are mainly used for light duty and synthetic castors.

The following dimensions have to be considered when selecting expander fittings:

- Internal tube dimension (P)
- Tube shape (round or square tube)
- Fitting length (Q)
- Flange length (B)

Refer to 'Options' page 111 and 126



Synthetic expander

(Product code suffix: -ER.../-EV...)

The castors are fitted by means of a synthetic expander which is inserted into a hole or a round or square tube. When screwing the bolt, the wedge is expanded and firmly pressed against the inner tube wall. In contrast to the metal expander fittings the inner tube surface is protected. However, the fitting's retention force is lower than with metal expander fittings.

A hexagon socket on the underside prevents the expander turning in the fitting tube and any uncontrolled loosening.

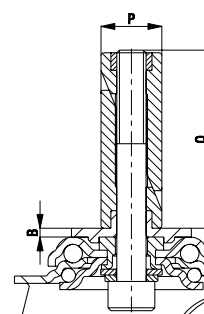
Synthetic expander fittings are used for light duty and synthetic castors.

As option synthetic expanders are available with corrosion-resistant clamping bolt (-EXR.../-EXV...).

The following dimensions have to be considered when selecting expander fittings:

- Internal tube dimension (P)
- Tube shape (round or square tube)
- Fitting length (Q)
- Flange length (B)

Refer to 'Options' page 111, 126 and 352



Fitting types

Plate fitting

Top plate fittings for light duty and synthetic castors

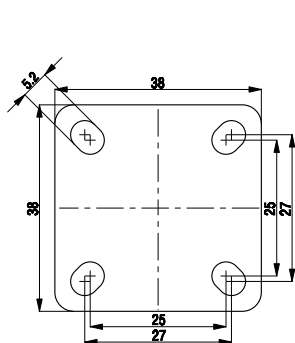


Plate No. 20

Used in bracket series:

LKDB: Wheel Ø 50-75 mm

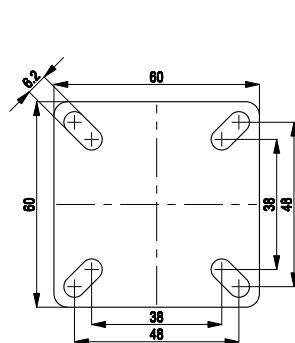


Plate No. 22

Used in bracket series:

LPA/BPA: Wheel Ø 35-100 mm
LPXA/BPXA: Wheel Ø 50-75 mm
LDA: Wheel Ø 50 mm

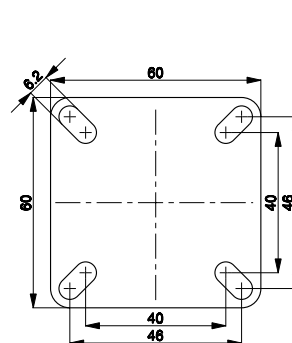


Plate No. 23

Used in bracket series:

LDA: Wheel Ø 75 mm
LKDG/LKDB: Wheel Ø 75-100 mm

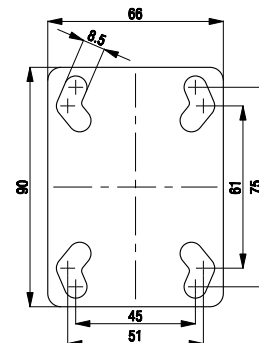


Plate No. 25

Used in bracket series:

LKPA/BKPA: Wheel Ø 80-150 mm
LKPXA/BKPXA: Wheel Ø 80-125 mm
LWK/LWG-P25: Wheel Ø 100-125 mm
LWKX/LWGX-PX25: Wheel Ø 100-125 mm

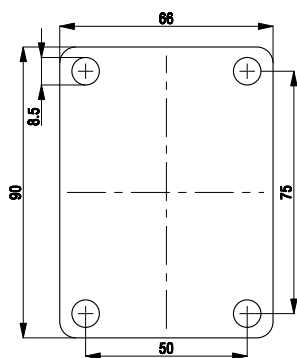


Plate No. 26

Used in bracket series:

LKPXA/BKPXA: Wheel Ø 125 mm
LWKX/LWGX-PX26: Wheel Ø 125 mm

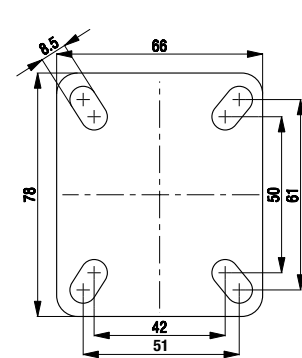


Plate No. 28

Used in bracket series:

LWK/LWG-P28: Wheel Ø 100-125 mm

Fitting types

Plate fitting

Top plate fittings for transport equipment and heavy duty castors

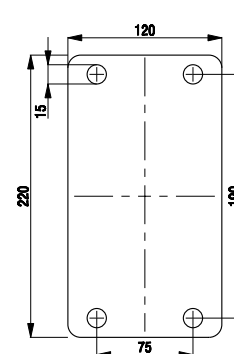
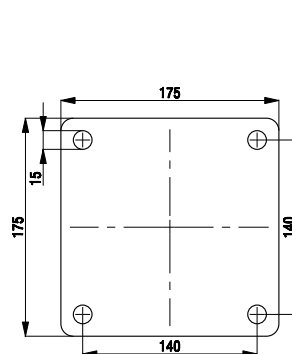
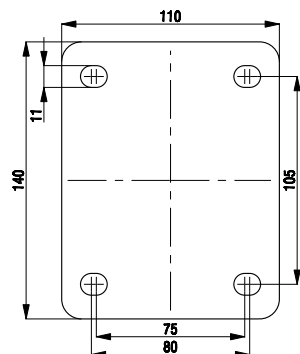
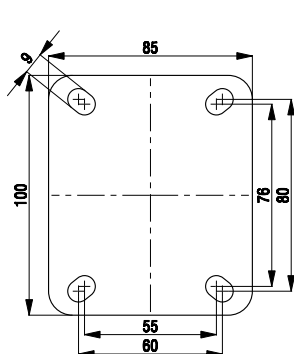


Plate No. 1

Plate No. 3

Plate No. 7

Plate No. 9

Used in bracket series:

LE/B:	Wheel Ø	60-125 mm
LEX/BX:	Wheel Ø	75-200 mm
L/B:	Wheel Ø	75-125 mm
LX/BX:	Wheel Ø	100-125 mm
LI/B:	Wheel Ø	80-125 mm
LIX/BX:	Wheel Ø	80-125 mm
LK/BK:	Wheel Ø	75-125 mm
LKX/BKX:	Wheel Ø	75-125 mm
LIK/BIK:	Wheel Ø	100-125 mm
LIKX/BKX:	Wheel Ø	100-125 mm
LH/BH:	Wheel Ø	75-125 mm
LHD:	Wheel Ø	60-80 mm
LHF/BHF:	Wheel Ø	100-125 mm
LPFE/BPFE:	Wheel Ø	100-125 mm
HRLH/HRLHD:	Wheel Ø	75 mm

Used in bracket series:

LE/B:	Wheel Ø	150-200 mm
LEX/BX:	Wheel Ø	150-200 mm
L/B:	Wheel Ø	140-250 mm
LX/BX:	Wheel Ø	150-200 mm
LI/BI:	Wheel Ø	150-200 mm
LIX/BX:	Wheel Ø	150-200 mm
LK/BK:	Wheel Ø	100-200 mm
LKX/BKX:	Wheel Ø	125-200 mm
LU/BH:	Wheel Ø	125-200 mm
LH/BH:	Wheel Ø	100-250 mm
LHD:	Wheel Ø	80-125 mm
LO/BO:	Wheel Ø	125-300 mm
LOD/BOD:	Wheel Ø	75-125 mm
LS/BS:	Wheel Ø	100-200 mm
LSD/BSL:	Wheel Ø	80-125 mm
LHF/BHF:	Wheel Ø	100-200 mm
LPFE/BPFE:	Wheel Ø	125-150 mm
LSFN/BSFN:	Wheel Ø	160-200 mm
LSFE/BSFE:	Wheel Ø	160-200 mm

Used in bracket series:

L:	Wheel Ø	250-280 mm
----	---------	------------

Used in bracket series:

B:	Wheel Ø	250-280 mm
----	---------	------------

Fitting types

Plate fitting

Top plate fittings for heavy duty castors

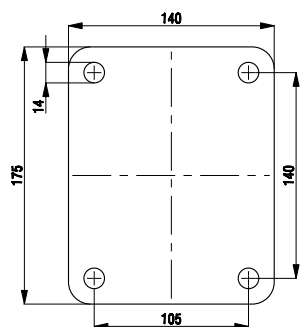


Plate No. 35

Used in bracket series:

LS/BS: Wheel Ø 150-400 mm
LSD/BSD: Wheel Ø 100-200 mm
LSFN/BSFN: Wheel Ø 200-250 mm
LSFE/BSFE: Wheel Ø 200-250 mm

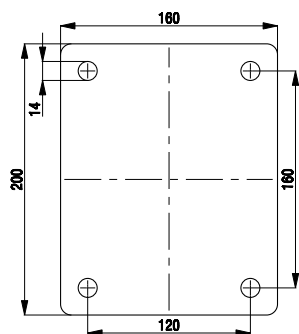


Plate No. 36

Used in bracket series:

LS/BS: Wheel Ø 300-520 mm
LSFN/BSFN: Wheel Ø 250-300 mm
LSFE/BSFE: Wheel Ø 250 mm

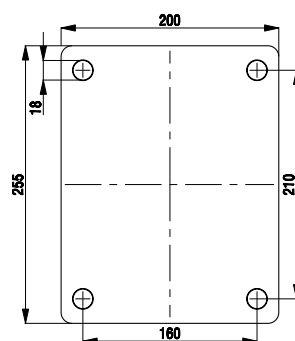


Plate No. 38

Used in bracket series:

LS/BS: Wheel Ø 200-620 mm
LSD/BSD: Wheel Ø 125-360 mm

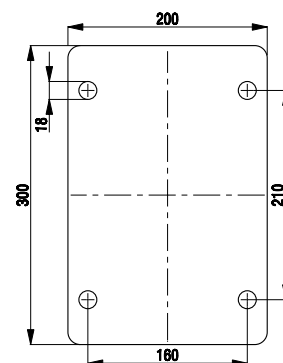


Plate No. 39

Used in bracket series:

BSD: Wheel Ø 300 mm

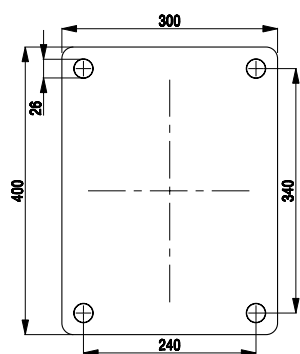


Plate No. 42

Used in bracket series:

LS/BS: Wheel Ø 250-600 mm
LSD/BSD: Wheel Ø 250-500 mm

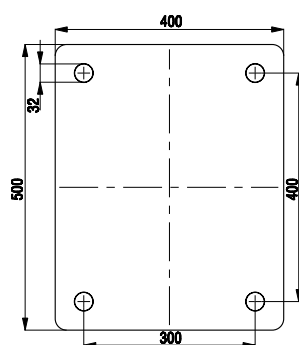


Plate No. 45

Used in bracket series:

LSD/BSD: Wheel Ø 300-400 mm

Fitting types

Plate fitting

Top plate fittings for levelling and malleable cast iron castors

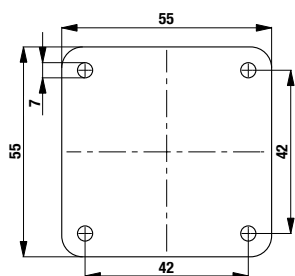


Plate No. 71

Used in bracket series:

HRP: Wheel Ø 45 mm

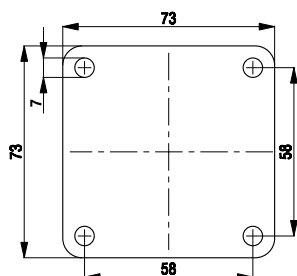


Plate No. 72

Used in bracket series:

HRP: Wheel Ø 50 mm

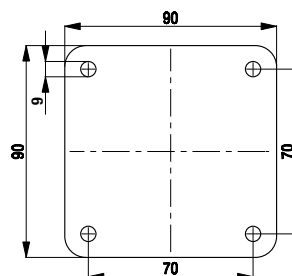


Plate No. 74

Used in bracket series:

HRP: Wheel Ø 63 mm

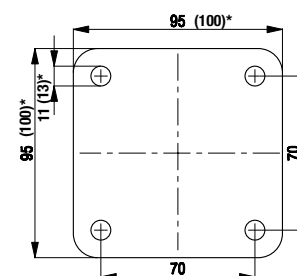


Plate No. 76 / 78*

Plate No. 76

Used in bracket series:

HRP: Wheel Ø 72 mm
HRSP: Wheel Ø 72 mm

*Plate No. 78

Used in bracket series:

HRSP: Wheel Ø 90 mm

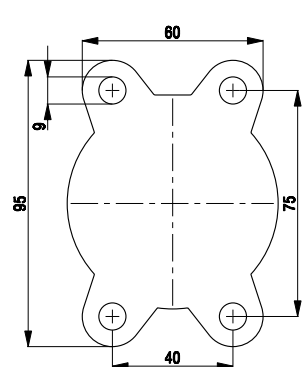


Plate No. 89

Used in bracket series:

LT/BT: Wheel Ø 65 mm

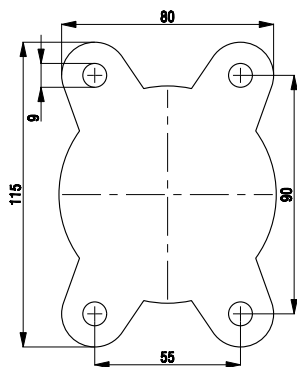


Plate No. 91

Used in bracket series:

LT/BT: Wheel Ø 75-80 mm

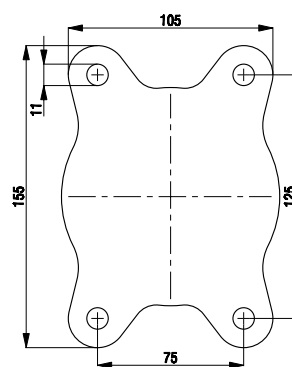


Plate No. 92

Used in bracket series:

LT/BT: Wheel Ø 100-125 mm

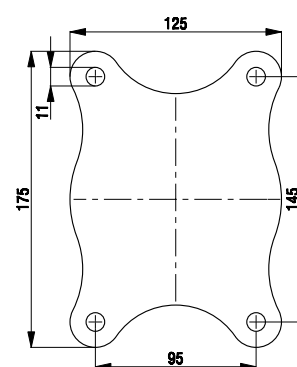


Plate No. 93

Used in bracket series:

LT/BT: Wheel Ø 150 mm