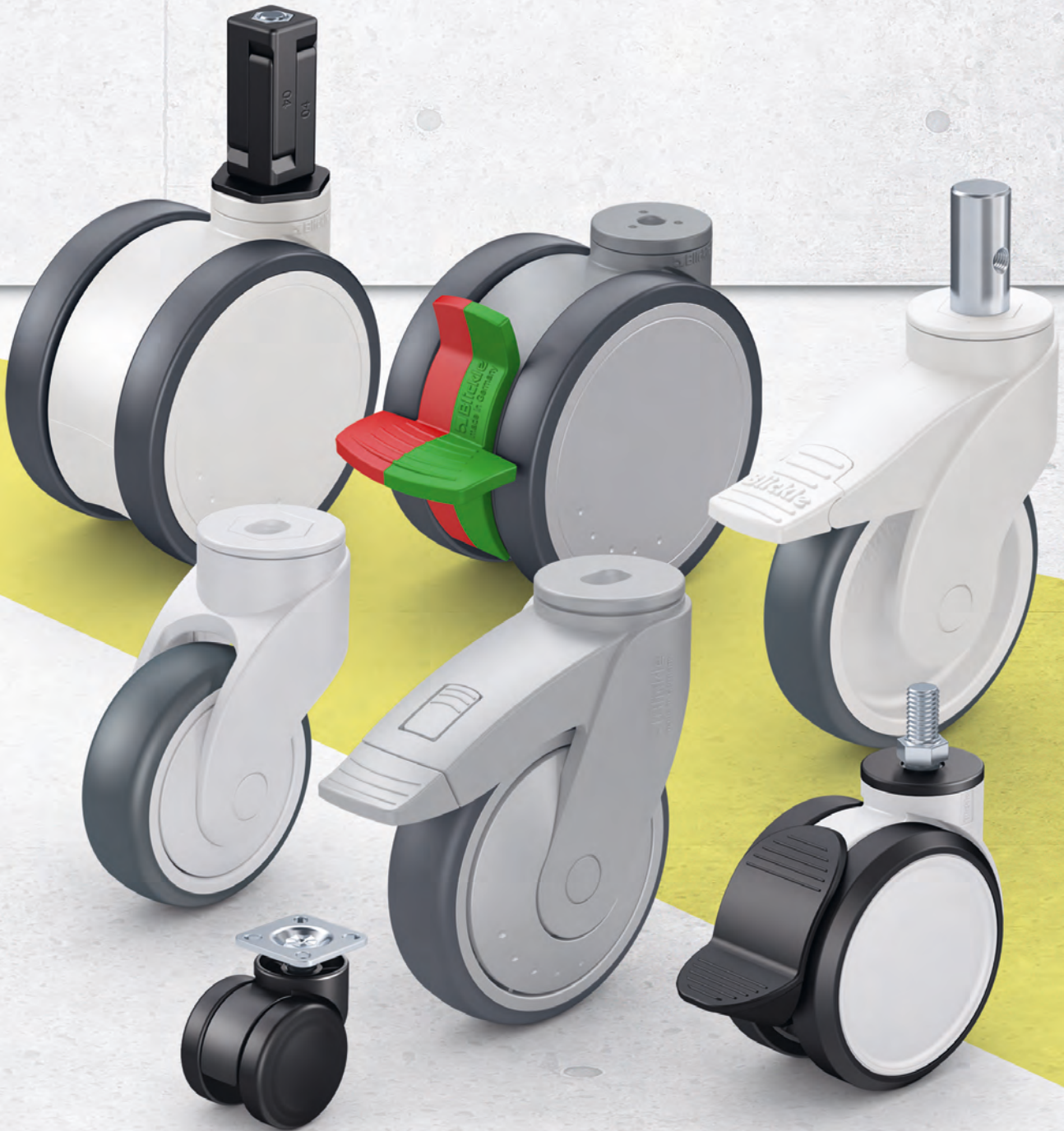


Synthetic castors



Selection tool

Synthetic castors

2



| Series | LKFG-TPA | LKFGX-TPA | LWK-TPA | LWG-TPA | LWKX-TPA | LWXG-TPA |
|---|--|--------------------------------------|--|---------------|---------------|---------------|
| Category | Castors with ball race groove in swivel head | | Castors with ball bearing in swivel head | | | |
| Tread / tyre | Thermoplastic rubber-elastomer (TPE) | | | | | |
| Tread and tyre hardness | 85 Shore A | 85 Shore A | 85 Shore A | 85 Shore A | 85 Shore A | 85 Shore A |
| Wheel centre / rim | polypropylene | polypropylene | polypropylene | polypropylene | polypropylene | polypropylene |
| Bracket material | thermoplastic | thermoplastic | nylon | nylon | nylon | nylon |
| Bracket colour | silver grey (optional grey white) | silver grey (optional grey white) | grey white | silver grey | grey white | silver grey |
| Wheel Ø | 125 mm | 125 mm | 100–125 mm | 100–125 mm | 100–125 mm | 100–125 mm |
| Castor load capacity up to | 110 kg | 110 kg | 110 kg | 110 kg | 110 kg | 110 kg |
| Corrosion-resistant | – | ✓ | – | – | ✓ | ✓ |
| “stop-fix” brake (-FI) | ✓ | ✓ | ✓ | ✓ | ✓ | ✓ |
| “Radstop” wheel brake (-RA) | – | – | – | – | – | – |
| Dual purpose directional lock combined with wheel brake (-RIFI) | – | – | – | – | – | – |
| For information about swivel castors, refer to | page 154 | page 155 | page 156–158 | page 159–161 | page 162–164 | page 165–167 |

✓ yes – no



| LKDG-PUA | LKDB-PUA | LKD-PATH | LKDG-PATH | LKDX-PATH | LKDGX-PATH |
|---|----------|---|-----------|-----------|------------|
| Twin wheel castors with plain synthetic swivel head bearing | | Twin wheel castors with ball bearing in swivel head | | | |
| Thermoplastic polyurethane (TPU) | | Thermoplastic polyurethane (TPU) | | | |

| | | | | | |
|------------|------------|------------|-------------|------------|-------------|
| 92 Shore A | 92 Shore A | 94 Shore A | 94 Shore A | 94 Shore A | 94 Shore A |
| nylon | nylon | nylon | nylon | nylon | nylon |
| nylon | nylon | nylon | nylon | nylon | nylon |
| light grey | black | grey white | silver grey | grey white | silver grey |
| 100 mm | 50–100 mm | 100–125 mm | 100–125 mm | 100–125 mm | 100–125 mm |
| 110 kg | 110 kg | 125 kg | 125 kg | 125 kg | 125 kg |

| | | | | | |
|----------|----------|--------------|--------------|--------------|--------------|
| optional | optional | – | – | ✓ | ✓ |
| – | – | ✓ | ✓ | ✓ | ✓ |
| ✓ | ✓ | – | – | – | – |
| – | – | ✓ | ✓ | ✓ | ✓ |
| page 170 | page 171 | page 172–173 | page 174–175 | page 176–177 | page 178–179 |

LKFG-TPA, BKFG-TPA series

Blickle FLOW synthetic castors with bolt hole, colour silver grey, wheel with thermoplastic rubber tread

110 kg

-20 °C to +50 °C

Bracket: LKFG/BKFG series

- high-quality thermoplastic
- colour silver grey RAL 7001
- modern, appealing design

Swivel bracket:

- double ball bearing in the swivel head
- bolt hole

Wheel: TPA series

- tread: high-quality thermoplastic rubber-elastomer (TPE), hardness 85 Shore A, colour grey, non-marking, oil containing
- wheel centre: high-quality polypropylene, impact resistant, colour silver grey RAL 7001

Other features:

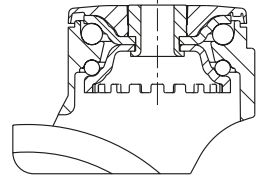
- the load capacity reduces at ambient temperatures above +30 °C

Additional details:

- bracket series: page 87
- brakes: page 112–113
- wheel series: page 60
- bearing types: page 84–85



2

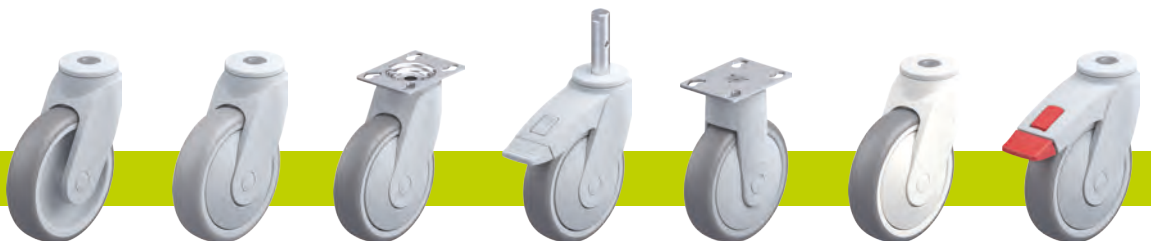


| Swivel castors | Swivel castors with "stop-fix" brake | Wheel Ø [mm] | Wheel width [mm] | Load capacity [kg] | Bearing type | Total height [mm] | Plate Ø [mm] | Bolt hole Ø [mm] | Offset swivel castor [mm] |
|-------------------|--------------------------------------|-----------------|---------------------|-----------------------|------------------|----------------------|-----------------|---------------------|------------------------------|
| LKFG-TPA 126G | LKFG-TPA 126G-FI | 125 | 32 | 110 | plain bore | 160 | 55 | 13 | 40 |
| LKFG-TPA 126G-11 | LKFG-TPA 126G-11-FI | 125 | 32 | 110 | plain bore | 160 | 55 | 11 | 40 |
| LKFG-TPA 126KF | LKFG-TPA 126KF-FI | 125 | 32 | 110 | ball bearing (C) | 160 | 55 | 13 | 40 |
| LKFG-TPA 126KF-11 | LKFG-TPA 126KF-11-FI | 125 | 32 | 110 | ball bearing (C) | 160 | 55 | 11 | 40 |

For corrosion-resistant versions of synthetic castors, see page 155



Versions / options



| | plain bore version | version soft tread 60 Shore A | with top plate fitting zinc-plated version | with zinc-plated plug-in stem | fixed castors | colour grey white RAL 9002 | brake lever in special colour |
|----------------------------|--------------------|-------------------------------|--|-------------------------------|-----------------|----------------------------|-------------------------------|
| Technical description page | | | 106 | 104 | | | |
| Product code suffix | | LKFG-TPS / BKFG-TPS series | -P25 | -ZA51 | BKFG-TPA series | LKF-TPA series | |
| Available for | | upon request* | all** | upon request*** | upon request | upon request | upon request |

* Load capacity reduced by 30%

** Increases total height of castors by 1 mm

*** ZA51: stem Ø 18 mm, stem length 62 mm, position cross hole 30 mm, cross hole for bolt M6

LKFGX-TPA, BKFGX-TPA series

Blickle FLOW synthetic castors, corrosion-resistant, with bolt hole, colour silver grey, wheel with thermoplastic rubber tread



110 kg

-20 °C to +50 °C

Bracket: LKFGX/BKFGX series

- high-quality thermoplastic
 - colour silver grey RAL 7001
 - all parts including axle material are corrosion-resistant
 - modern, appealing design
- Swivel bracket:
- double corrosion-resistant ball bearing in the swivel head
 - bolt hole

Wheel: TPA series

- tread: high-quality thermoplastic rubber-elastomer (TPE), hardness 85 Shore A, colour grey, non-marking, oil containing
- wheel centre: high-quality polypropylene, impact resistant, colour silver grey RAL 7001

Other features:

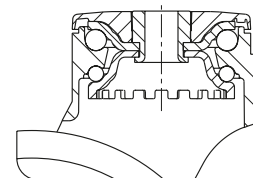
- the load capacity reduces at ambient temperatures above +30 °C

Additional details:

- bracket series: page 87
- brakes: page 112–113
- wheel series: page 60
- bearing types: page 84–85



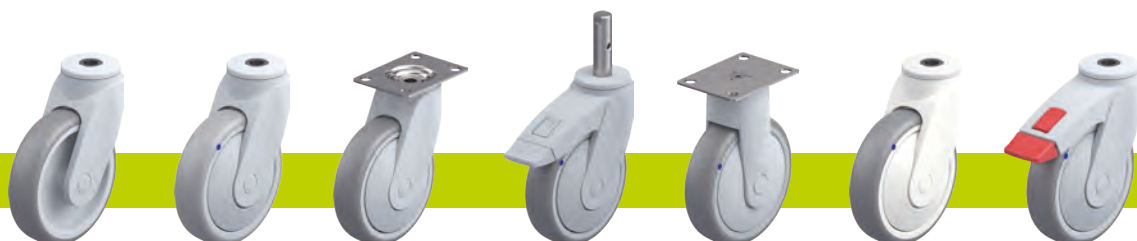
2



| Swivel castors | Swivel castors with "stop-fix" brake | Wheel Ø [mm] | Wheel width [mm] | Load capacity [kg] | Bearing type | Total height [mm] | Plate Ø [mm] | Bolt hole Ø [mm] | Offset swivel castor [mm] |
|---------------------|--------------------------------------|-----------------|---------------------|-----------------------|------------------|----------------------|-----------------|---------------------|------------------------------|
| LKFGX-TPA 126G | LKFGX-TPA 126G-FI | 125 | 32 | 110 | plain bore | 160 | 55 | 13 | 40 |
| LKFGX-TPA 126G-11 | LKFGX-TPA 126G-11-FI | 125 | 32 | 110 | plain bore | 160 | 55 | 11 | 40 |
| LKFGX-TPA 126XKF-11 | LKFGX-TPA 126XKF-11-FI | 125 | 32 | 110 | ball bearing (C) | 160 | 55 | 11 | 40 |
| LKFGX-TPA 126XKF | LKFGX-TPA 126XKF-FI | 125 | 32 | 110 | ball bearing | 160 | 55 | 13 | 40 |



Versions / options



| | plain bore version | version soft tread 60 Shore A | with top plate fitting stainless steel version in accordance with GKN standard | with stainless steel plug-in stem | fixed castors | colour grey white RAL 9002 | brake lever in special colour |
|----------------------------|--------------------|-------------------------------|--|-----------------------------------|------------------|----------------------------|-------------------------------|
| Technical description page | | | 106 | 104 | | | |
| Product code suffix | | LKFGX-TPS / BKFGX-TPS series | -PX27 | -ZAX51 | BKFGX-TPA series | LKFX-TPA series | |
| Available for | | upon request* | all** | upon request*** | upon request | upon request | upon request |

* Load capacity reduced by 30%

** Increases total height of castors by 1 mm

*** ZAX51: stem Ø 18 mm, stem length 62 mm, position cross hole 30 mm, cross hole for bolt M6

LWK-TPA series

Blickle WAVE synthetic castors with bolt hole, colour grey white, wheel with thermoplastic rubber tread



100–110 kg

-20 °C to +60 °C

Bracket: LWK series

- high-quality nylon 6, impact resistant
- encapsulated, double-sealed, grooved ball bearing in the swivel head
- bolt hole
- colour grey white RAL 9002
- modern, appealing design

Wheel: TPA series

- tread: high-quality thermoplastic rubber-elastomer (TPE), hardness 85 Shore A, colour grey, non-marking, oil containing
- wheel centre: high-quality polypropylene, impact resistant, colour grey white RAL 9002

Other features:

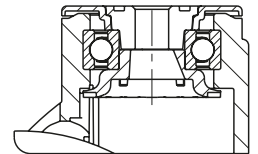
- the load capacity reduces at ambient temperatures above +30 °C

Additional details:

- bracket series: page 88
- brakes: page 112–113
- wheel series: page 60
- bearing types: page 84–85



2



| Swivel castors | Swivel castors with "stop-fix" brake | Wheel Ø [mm] | Wheel width [mm] | Load capacity [kg] | Bearing type | Total height [mm] | Plate Ø [mm] | Bolt hole Ø [mm] | Offset swivel castor [mm] |
|------------------|--------------------------------------|--------------|------------------|--------------------|------------------|-------------------|--------------|------------------|---------------------------|
| LWK-TPA 101G | LWK-TPA 101G-FI | 100 | 32 | 100 | plain bore | 135 | 55 | 13 | 38 |
| LWK-TPA 101G-11 | LWK-TPA 101G-11-FI | 100 | 32 | 100 | plain bore | 135 | 55 | 11 | 38 |
| LWK-TPA 101KF | LWK-TPA 101KF-FI | 100 | 32 | 100 | ball bearing (C) | 135 | 55 | 13 | 38 |
| LWK-TPA 101KF-11 | LWK-TPA 101KF-11-FI | 100 | 32 | 100 | ball bearing (C) | 135 | 55 | 11 | 38 |
| LWK-TPA 126G | LWK-TPA 126G-FI | 125 | 32 | 110 | plain bore | 160 | 55 | 13 | 40 |
| LWK-TPA 126G-11 | LWK-TPA 126G-11-FI | 125 | 32 | 110 | plain bore | 160 | 55 | 11 | 40 |
| LWK-TPA 126KF | LWK-TPA 126KF-FI | 125 | 32 | 110 | ball bearing (C) | 160 | 55 | 13 | 40 |
| LWK-TPA 126KF-11 | LWK-TPA 126KF-11-FI | 125 | 32 | 110 | ball bearing (C) | 160 | 55 | 11 | 40 |

For corrosion-resistant versions of synthetic castors, see page 162

Versions / options *



| | plain bore version | electrically-conductive version, non-marking, grey | with "central-stop" central brake system | with threaded pin M10 x 20 M12 x 20 | with synthetic expander fitting | with metal expander fitting | brake lever in special colour |
|----------------------------|--------------------|--|--|-------------------------------------|-----------------------------------|------------------------------------|-------------------------------|
| Technical description page | | 50 | 113 | 104 | 105 | 105 | |
| Product code suffix | | LWKE-...-ELS | -CS11 | -GS10 / -GS12 | see page 168 | see page 168 | |
| Available for | | all ball bearing versions** | all with bolt hole Ø 13 mm | all with bolt hole Ø 13 mm | bolt hole Ø 11 mm upon request*** | bolt hole Ø 11 mm upon request**** | upon request |

* Other versions / options: buffers AW / AG / ARG series; rotating buffers -AMW / -AMG series see page 169 (technical information on page 116)

** Load capacity of electrically conductive version reduced by 35%

*** Not for electrically conductive version, Total height +3 mm

**** Total height +7 mm

LWK-TPA series

Blickle WAVE synthetic castors with top plate, colour grey white, wheel with thermoplastic rubber tread



100–110 kg

-20 °C to +60 °C

Bracket: LWK series

- high-quality nylon 6, impact resistant
- encapsulated, double-sealed, grooved ball bearing in the swivel head
- zinc-plated blue-passivated steel top plate fitting (Cr6-free)
- colour grey white RAL 9002
- modern, appealing design

Wheel: TPA series

- tread: high-quality thermoplastic rubber-elastomer (TPE), hardness 85 Shore A, colour grey, non-marking, oil containing
- wheel centre: high-quality polypropylene, impact resistant, colour grey white RAL 9002

Other features:

- the load capacity reduces at ambient temperatures above +30 °C

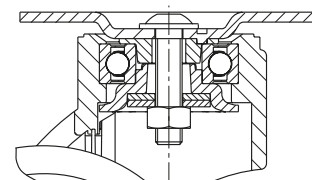
Additional details:

- bracket series: page 88
- brakes: page 112–113
- wheel series: page 60
- bearing types: page 84–85



BLICKLE DESIGN LINE

2



| Swivel castors | Swivel castors with "stop-fix" brake | Wheel Ø [mm] | Wheel width [mm] | Load capacity [kg] | Bearing type | Total height [mm] | Plate size [mm] | Bolt hole spacing [mm] | Bolt hole Ø [mm] | Offset swivel castor [mm] |
|-------------------|--------------------------------------|-----------------|---------------------|-----------------------|------------------|----------------------|--------------------|---------------------------|---------------------|------------------------------|
| LWK-TPA 101G-P25 | LWK-TPA 101G-FI-P25 | 100 | 32 | 100 | plain bore | 138 | 90 x 66 | 75 x 45 / 61 x 51 | 8.5 | 38 |
| LWK-TPA 101KF-P25 | LWK-TPA 101KF-FI-P25 | 100 | 32 | 100 | ball bearing (C) | 138 | 90 x 66 | 75 x 45 / 61 x 51 | 8.5 | 38 |
| LWK-TPA 126G-P25 | LWK-TPA 126G-FI-P25 | 125 | 32 | 110 | plain bore | 163 | 90 x 66 | 75 x 45 / 61 x 51 | 8.5 | 40 |
| LWK-TPA 126KF-P25 | LWK-TPA 126KF-FI-P25 | 125 | 32 | 110 | ball bearing (C) | 163 | 90 x 66 | 75 x 45 / 61 x 51 | 8.5 | 40 |

For corrosion-resistant versions of synthetic castors, see page 163

Versions / options



| | plain bore version | electrically-conductive version, non-marking, grey | with plate size 78x66 mm 61x50/50x42 mm | brake lever in special colour |
|----------------------------|--------------------|--|---|-------------------------------|
| Technical description page | | 50 | 106 | |
| Product code suffix | | LWKE-...-ELS | -P28 | |
| Available for | | all ball bearing versions* | upon request | upon request |

* Load capacity of electrically conductive version reduced by 35%

LWK-TPA series

Blickle WAVE synthetic castors with stem, colour grey white, wheel with thermoplastic rubber tread



100–110 kg

-20 °C to +60 °C

Bracket: LWK series

- high-quality nylon 6, impact resistant
- encapsulated, double-sealed, grooved ball bearing in the swivel head
- zinc-plated, blue-passivated steel plug-in stem (Cr6-free), bolted and secured
- colour grey white RAL 9002
- modern, appealing design

Wheel: TPA series

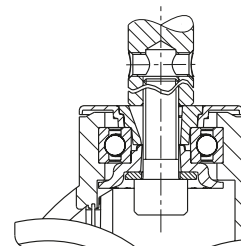
- tread: high-quality thermoplastic rubber-elastomer (TPE), hardness 85 Shore A, colour grey, non-marking, oil containing
- wheel centre: high-quality polypropylene, impact resistant, colour grey white RAL 9002

Other features:

- the load capacity reduces at ambient temperatures above +30 °C

Additional details:

- bracket series: page 88
- brakes: page 112–113
- wheel series: page 60
- bearing types: page 84–85



| Swivel castors | Swivel castors with "stop-fix" brake | Wheel Ø [mm] | Wheel width [mm] | Load capacity [kg] | Bearing type | Total height [mm] | Stem Ø [mm] | Stem length [mm] | Ø cross hole [mm] | Position cross hole (H) [mm] | Offset swivel castor [mm] |
|--------------------|--------------------------------------|-----------------|---------------------|-----------------------|------------------|----------------------|----------------|---------------------|----------------------|------------------------------|------------------------------|
| LWK-TPA 101G-ZA51 | LWK-TPA 101G-FI-ZA51 | 100 | 32 | 100 | plain bore | 135 | 18 | 62 | M6 | 30 | 38 |
| LWK-TPA 101G-ZA55 | LWK-TPA 101G-FI-ZA55 | 100 | 32 | 100 | plain bore | 135 | 22 | 45 | M8 | 20 | 38 |
| LWK-TPA 101KF-ZA51 | LWK-TPA 101KF-FI-ZA51 | 100 | 32 | 100 | ball bearing (C) | 135 | 18 | 62 | M6 | 30 | 38 |
| LWK-TPA 101KF-ZA55 | LWK-TPA 101KF-FI-ZA55 | 100 | 32 | 100 | ball bearing (C) | 135 | 22 | 45 | M8 | 20 | 38 |
| LWK-TPA 126G-ZA51 | LWK-TPA 126G-FI-ZA51 | 125 | 32 | 110 | plain bore | 160 | 18 | 62 | M6 | 30 | 40 |
| LWK-TPA 126G-ZA55 | LWK-TPA 126G-FI-ZA55 | 125 | 32 | 110 | plain bore | 160 | 22 | 45 | M8 | 20 | 40 |
| LWK-TPA 126KF-ZA51 | LWK-TPA 126KF-FI-ZA51 | 125 | 32 | 110 | ball bearing (C) | 160 | 18 | 62 | M6 | 30 | 40 |
| LWK-TPA 126KF-ZA55 | LWK-TPA 126KF-FI-ZA55 | 125 | 32 | 110 | ball bearing (C) | 160 | 22 | 45 | M8 | 20 | 40 |

For corrosion-resistant versions of synthetic castors, see page 164
Additional stem fitting dimensions available upon request

Versions / options



| | plain bore version | electrically-conductive version, non-marking, grey | brake lever in special colour |
|----------------------------|--------------------|--|-------------------------------|
| Technical description page | | 50 | |
| Product code suffix | | LWKE....-ELS | |
| Available for | | all ball bearing versions* | upon request |

* Load capacity of electrically conductive version reduced by 35%

LWG-TPA series

Blickle WAVE synthetic castors with bolt hole, colour silver grey, wheel with thermoplastic rubber tread



100–110 kg

-20 °C to +60 °C

Bracket: LWG series

- high-quality nylon 6, impact resistant
- encapsulated, double-sealed, grooved ball bearing in the swivel head
- bolt hole
- colour silver grey RAL 7001
- modern, appealing design

Wheel: TPA series

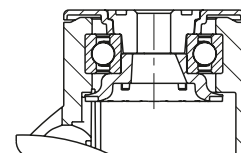
- tread: high-quality thermoplastic rubber-elastomer (TPE), hardness 85 Shore A, colour grey, non-marking, oil containing
- wheel centre: high-quality polypropylene, impact resistant, colour silver grey RAL 7001

Other features:

- the load capacity reduces at ambient temperatures above +30 °C

Additional details:

- bracket series: page 88
- brakes: page 112–113
- wheel series: page 60
- bearing types: page 84–85



| Swivel castors | Swivel castors with "stop-fix" brake | Wheel Ø [mm] | Wheel width [mm] | Load capacity [kg] | Bearing type | Total height [mm] | Plate Ø [mm] | Bolt hole Ø [mm] | Offset swivel castor [mm] |
|------------------|--------------------------------------|--------------|------------------|--------------------|------------------|-------------------|--------------|------------------|---------------------------|
| LWG-TPA 101G | LWG-TPA 101G-FI | 100 | 32 | 100 | plain bore | 135 | 55 | 13 | 38 |
| LWG-TPA 101G-11 | LWG-TPA 101G-11-FI | 100 | 32 | 100 | plain bore | 135 | 55 | 11 | 38 |
| LWG-TPA 101KF | LWG-TPA 101KF-FI | 100 | 32 | 100 | ball bearing (C) | 135 | 55 | 13 | 38 |
| LWG-TPA 101KF-11 | LWG-TPA 101KF-11-FI | 100 | 32 | 100 | ball bearing (C) | 135 | 55 | 11 | 38 |
| LWG-TPA 126G | LWG-TPA 126G-FI | 125 | 32 | 110 | plain bore | 160 | 55 | 13 | 40 |
| LWG-TPA 126G-11 | LWG-TPA 126G-11-FI | 125 | 32 | 110 | plain bore | 160 | 55 | 11 | 40 |
| LWG-TPA 126KF | LWG-TPA 126KF-FI | 125 | 32 | 110 | ball bearing (C) | 160 | 55 | 13 | 40 |
| LWG-TPA 126KF-11 | LWG-TPA 126KF-11-FI | 125 | 32 | 110 | ball bearing (C) | 160 | 55 | 11 | 40 |

For corrosion-resistant versions of synthetic castors, see page 165

Versions / options *



| | plain bore version | electrically-conductive version, non-marking, grey | with "central-stop" central brake system | with threaded pin M10 x 20 M12 x 20 | with synthetic expander fitting | with metal expander fitting | brake lever in special colour |
|----------------------------|--------------------|--|--|-------------------------------------|-----------------------------------|------------------------------------|-------------------------------|
| Technical description page | | 50 | 113 | 104 | 105 | 105 | |
| Product code suffix | | LWGE-...-ELS | -CS11 | -GS10 / -GS12 | see page 168 | see page 168 | |
| Available for | | all ball bearing versions** | all with bolt hole Ø 13 mm | all with bolt hole Ø 13 mm | bolt hole Ø 11 mm upon request*** | bolt hole Ø 11 mm upon request**** | upon request |

* Other versions / options: buffers AW / AG / ARG series; rotating buffers -AMW / -AMG series see page 169 (technical information on page 116)

** Load capacity of electrically conductive version reduced by 35%

*** Not for electrically conductive version, Total height +3 mm

**** Total height +7 mm

LWG-TPA series

Blickle WAVE synthetic castors with top plate, colour silver grey, wheel with thermoplastic rubber tread



100–110 kg

-20 °C to +60 °C

Bracket: LWG series

- high-quality nylon 6, impact resistant
- encapsulated, double-sealed, grooved ball bearing in the swivel head
- zinc-plated blue-passivated steel top plate fitting (Cr6-free)
- colour silver grey RAL 7001
- modern, appealing design

Wheel: TPA series

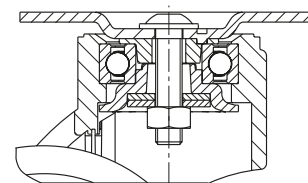
- tread: high-quality thermoplastic rubber-elastomer (TPE), hardness 85 Shore A, colour grey, non-marking, oil containing
- wheel centre: high-quality polypropylene, impact resistant, colour silver grey RAL 7001

Other features:

- the load capacity reduces at ambient temperatures above +30 °C

Additional details:

- bracket series: page 88
- brakes: page 112–113
- wheel series: page 60
- bearing types: page 84–85



| Swivel castors | Swivel castors with "stop-fix" brake | Wheel Ø [mm] | Wheel width [mm] | Load capacity [kg] | Bearing type | Total height [mm] | Plate size [mm] | Bolt hole spacing [mm] | Bolt hole Ø [mm] | Offset swivel castor [mm] |
|-------------------|--------------------------------------|-----------------|---------------------|-----------------------|------------------|----------------------|--------------------|---------------------------|---------------------|------------------------------|
| LWG-TPA 101G-P25 | LWG-TPA 101G-FI-P25 | 100 | 32 | 100 | plain bore | 138 | 90 x 66 | 75 x 45 / 61 x 51 | 8.5 | 38 |
| LWG-TPA 101KF-P25 | LWG-TPA 101KF-FI-P25 | 100 | 32 | 100 | ball bearing (C) | 138 | 90 x 66 | 75 x 45 / 61 x 51 | 8.5 | 38 |
| LWG-TPA 126G-P25 | LWG-TPA 126G-FI-P25 | 125 | 32 | 110 | plain bore | 163 | 90 x 66 | 75 x 45 / 61 x 51 | 8.5 | 40 |
| LWG-TPA 126KF-P25 | LWG-TPA 126KF-FI-P25 | 125 | 32 | 110 | ball bearing (C) | 163 | 90 x 66 | 75 x 45 / 61 x 51 | 8.5 | 40 |

For corrosion-resistant versions of synthetic castors, see page 166

Versions / options



| | plain bore version | electrically-conductive version, non-marking, grey | with plate size 78x66 mm 61x50/50x42 mm | brake lever in special colour |
|----------------------------|--------------------|--|---|-------------------------------|
| Technical description page | | 50 | 106 | |
| Product code suffix | | LWGE-...-ELS | -P28 | |
| Available for | | all ball bearing versions* | upon request | upon request |

* Load capacity of electrically conductive version reduced by 35%

LWG-TPA series

**Blickle WAVE synthetic castors,
with stem, colour silver grey,
wheel with thermoplastic rubber tread**



100–110 kg

-20 °C to +60 °C

Bracket: LWG series

- high-quality nylon 6, impact resistant
- encapsulated, double-sealed, grooved ball bearing in the swivel head
- zinc-plated, blue-passivated steel plug-in stem (Cr6-free), bolted and secured
- colour silver grey RAL 7001
- modern, appealing design

Wheel: TPA series

- tread: high-quality thermoplastic rubber-elastomer (TPE), hardness 85 Shore A, colour grey, non-marking, oil containing
- wheel centre: high-quality polypropylene, impact resistant, colour silver grey RAL 7001

Other features:

- the load capacity reduces at ambient temperatures above +30 °C

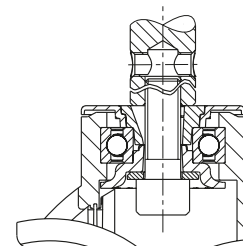
Additional details:

- bracket series: page 88
- brakes: page 112–113
- wheel series: page 60
- bearing types: page 84–85



**BLICKLE
DESIGN LINE**

2



| Swivel castors | Swivel castors with "stop-fix" brake | Wheel Ø [mm] | Wheel width [mm] | Load capacity [kg] | Bearing type | Total height [mm] | Stem Ø [mm] | Stem length [mm] | Ø cross hole [mm] | Position cross hole (H) [mm] | Offset swivel castor [mm] |
|--------------------|--------------------------------------|-----------------|---------------------|-----------------------|------------------|----------------------|----------------|---------------------|----------------------|------------------------------|------------------------------|
| LWG-TPA 101G-ZA51 | LWG-TPA 101G-FI-ZA51 | 100 | 32 | 100 | plain bore | 135 | 18 | 62 | M6 | 30 | 38 |
| LWG-TPA 101G-ZA55 | LWG-TPA 101G-FI-ZA55 | 100 | 32 | 100 | plain bore | 135 | 22 | 45 | M8 | 20 | 38 |
| LWG-TPA 101KF-ZA51 | LWG-TPA 101KF-FI-ZA51 | 100 | 32 | 100 | ball bearing (C) | 135 | 18 | 62 | M6 | 30 | 38 |
| LWG-TPA 101KF-ZA55 | LWG-TPA 101KF-FI-ZA55 | 100 | 32 | 100 | ball bearing (C) | 135 | 22 | 45 | M8 | 20 | 38 |
| LWG-TPA 126G-ZA51 | LWG-TPA 126G-FI-ZA51 | 125 | 32 | 110 | plain bore | 160 | 18 | 62 | M6 | 30 | 40 |
| LWG-TPA 126G-ZA55 | LWG-TPA 126G-FI-ZA55 | 125 | 32 | 110 | plain bore | 160 | 22 | 45 | M8 | 20 | 40 |
| LWG-TPA 126KF-ZA51 | LWG-TPA 126KF-FI-ZA51 | 125 | 32 | 110 | ball bearing (C) | 160 | 18 | 62 | M6 | 30 | 40 |
| LWG-TPA 126KF-ZA55 | LWG-TPA 126KF-FI-ZA55 | 125 | 32 | 110 | ball bearing (C) | 160 | 22 | 45 | M8 | 20 | 40 |

For corrosion-resistant versions of synthetic castors, see page 167
Additional stem fitting dimensions available upon request

Versions / options



| | plain bore version | electrically-conductive version, non-marking, grey | brake lever in special colour |
|----------------------------|--------------------|--|-------------------------------|
| Technical description page | | 50 | |
| Product code suffix | | LWGE-...-ELS | |
| Available for | | all ball bearing versions* | upon request |

* Load capacity of electrically conductive version reduced by 35%

LWKX-TPA series

Blickle WAVE synthetic castors, corrosion-resistant, with bolt hole, colour grey white, wheel with thermoplastic rubber tread



100–110 kg

-20 °C to +60 °C

Bracket: LWKX series

- high-quality nylon 6, impact resistant
- moulded corrosion-resistant grooved ball bearing in the swivel head sealed on both sides
- bolt hole
- colour grey white RAL 9002
- all parts including axle material are corrosion-resistant
- modern, appealing design

Wheel: TPA series

- tread: high-quality thermoplastic rubber-elastomer (TPE), hardness 85 Shore A, colour grey, non-marking, oil containing
- wheel centre: high-quality polypropylene, impact resistant, colour grey white RAL 9002

Other features:

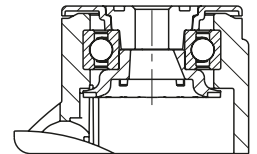
- the load capacity reduces at ambient temperatures above +30 °C

Additional details:

- bracket series: page 88
- brakes: page 112–113
- wheel series: page 60
- bearing types: page 84–85



2



| Swivel castors | Swivel castors with "stop-fix" brake | Wheel Ø [mm] | Wheel width [mm] | Load capacity [kg] | Bearing type | Total height [mm] | Plate Ø [mm] | Bolt hole Ø [mm] | Offset swivel castor [mm] |
|--------------------|--------------------------------------|-----------------|---------------------|-----------------------|------------------|----------------------|-----------------|---------------------|------------------------------|
| LWKX-TPA 101G | LWKX-TPA 101G-FI | 100 | 32 | 100 | plain bore | 135 | 55 | 13 | 38 |
| LWKX-TPA 101G-11 | LWKX-TPA 101G-11-FI | 100 | 32 | 100 | plain bore | 135 | 55 | 11 | 38 |
| LWKX-TPA 101XKF | LWKX-TPA 101XKF-FI | 100 | 32 | 100 | ball bearing (C) | 135 | 55 | 13 | 38 |
| LWKX-TPA 101XKF-11 | LWKX-TPA 101XKF-11-FI | 100 | 32 | 100 | ball bearing (C) | 135 | 55 | 11 | 38 |
| LWKX-TPA 126G | LWKX-TPA 126G-FI | 125 | 32 | 110 | plain bore | 160 | 55 | 13 | 40 |
| LWKX-TPA 126G-11 | LWKX-TPA 126G-11-FI | 125 | 32 | 110 | plain bore | 160 | 55 | 11 | 40 |
| LWKX-TPA 126XKF | LWKX-TPA 126XKF-FI | 125 | 32 | 110 | ball bearing (C) | 160 | 55 | 13 | 40 |
| LWKX-TPA 126XKF-11 | LWKX-TPA 126XKF-11-FI | 125 | 32 | 110 | ball bearing (C) | 160 | 55 | 11 | 40 |

Versions / options *



| | plain bore version | electrically-conductive version, non-marking, grey | with threaded pin made from stainless steel M10 x 20 | with threaded pin made from stainless steel M12 x 20 | with synthetic expander fitting | brake lever in special colour |
|----------------------------|--------------------|--|--|--|-----------------------------------|-------------------------------|
| Technical description page | | 50 | 104 | 104 | 105 | |
| Product code suffix | | LWKXE-...-ELS | -GSX10 | -GSX12 | see page 168 | |
| Available for | | all ball bearing versions** | all with bolt hole Ø 13 mm | all with bolt hole Ø 13 mm | bolt hole Ø 11 mm upon request*** | upon request |

* Other versions / options: buffers AW / AG / ARG series; rotating buffers -AMWX / -AMGX series see page 169 (technical information on page 116)

** Load capacity of electrically conductive version reduced by 35%

*** Not for electrically conductive version, Total height +3 mm

LWKX-TPA series

Blickle WAVE synthetic castors, corrosion-resistant, with top plate, colour grey white, wheel with thermoplastic rubber tread



100–110 kg

-20 °C to +60 °C

Bracket: LWKX series

- high-quality nylon 6, impact resistant
- moulded corrosion-resistant grooved ball bearing in the swivel head sealed on both sides
- with top plate fitting made of stainless steel
- colour grey white RAL 9002
- all parts including axle material are corrosion-resistant
- modern, appealing design

Wheel: TPA series

- tread: high-quality thermoplastic rubber-elastomer (TPE), hardness 85 Shore A, colour grey, non-marking, oil containing
- wheel centre: high-quality polypropylene, impact resistant, colour grey white RAL 9002

Other features:

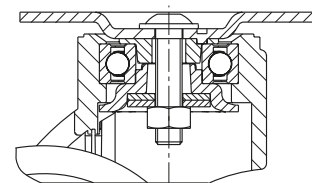
- the load capacity reduces at ambient temperatures above +30 °C

Additional details:

- bracket series: page 89
- brakes: page 112–113
- wheel series: page 60
- bearing types: page 84–85



2



| Swivel castors | Swivel castors with "stop-fix" brake | Wheel Ø [mm] | Wheel width [mm] | Load capacity [kg] | Bearing type | Total height [mm] | Plate size [mm] | Bolt hole spacing [mm] | Bolt hole Ø [mm] | Offset swivel castor [mm] |
|----------------------|--------------------------------------|-----------------|---------------------|-----------------------|------------------|----------------------|--------------------|---------------------------|---------------------|------------------------------|
| LWKX-TPA 101G-PX25 | LWKX-TPA 101G-FI-PX25 | 100 | 32 | 100 | plain bore | 138 | 90 x 66 | 75 x 45 / 61 x 51 | 8.5 | 38 |
| LWKX-TPA 101XKF-PX25 | LWKX-TPA 101XKF-FI-PX25 | 100 | 32 | 100 | ball bearing (C) | 138 | 90 x 66 | 75 x 45 / 61 x 51 | 8.5 | 38 |
| LWKX-TPA 126G-PX25 | LWKX-TPA 126G-FI-PX25 | 125 | 32 | 110 | plain bore | 163 | 90 x 66 | 75 x 45 / 61 x 51 | 8.5 | 40 |
| LWKX-TPA 126XKF-PX25 | LWKX-TPA 126XKF-FI-PX25 | 125 | 32 | 110 | ball bearing (C) | 163 | 90 x 66 | 75 x 45 / 61 x 51 | 8.5 | 40 |

Versions / options



| | plain bore version | electrically-conductive version, non-marking, grey | with plate size 90x66 mm 75x50 mm | brake lever in special colour |
|----------------------------|--------------------|--|-----------------------------------|-------------------------------|
| Technical description page | | 50 | 106 | |
| Product code suffix | | LWKXE-...-ELS | -PX26 | |
| Available for | | all ball bearing versions* | upon request** | upon request |

* Load capacity of electrically conductive version reduced by 35%
 ** In accordance with DIN 18867-8 (large-scale catering equipment)

LWKX-TPA series

Blickle WAVE synthetic castors, corrosion-resistant, with stem, colour grey white, wheel with thermoplastic rubber tread



100–110 kg

-20 °C to +60 °C

Bracket: LWKX series

- high-quality nylon 6, impact resistant
- moulded corrosion-resistant grooved ball bearing in the swivel head sealed on both sides
- with stainless steel plug-in stem, bolted and secured
- colour grey white RAL 9002
- all parts including axle material are corrosion-resistant
- modern, appealing design

Wheel: TPA series

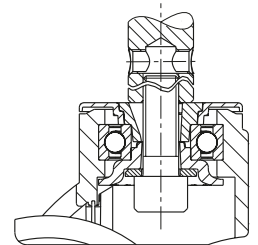
- tread: high-quality thermoplastic rubber-elastomer (TPE), hardness 85 Shore A, colour grey, non-marking, oil containing
- wheel centre: high-quality polypropylene, impact resistant, colour grey white RAL 9002

Other features:

- the load capacity reduces at ambient temperatures above +30 °C

Additional details:

- bracket series: page 89
- brakes: page 112–113
- wheel series: page 60
- bearing types: page 84–85



| Swivel castors | Swivel castors with "stop-fix" brake | Wheel Ø [mm] | Wheel width [mm] | Load capacity [kg] | Bearing type | Total height [mm] | Stem Ø [mm] | Stem length [mm] | Ø cross hole [mm] | Position cross hole (H) [mm] | Offset swivel castor [mm] |
|-----------------------|--------------------------------------|-----------------|---------------------|-----------------------|------------------|----------------------|----------------|---------------------|----------------------|------------------------------|------------------------------|
| LWKX-TPA 101G-ZAX51 | LWKX-TPA 101G-FI-ZAX51 | 100 | 32 | 100 | plain bore | 135 | 18 | 62 | M6 | 30 | 38 |
| LWKX-TPA 101G-ZAX55 | LWKX-TPA 101G-FI-ZAX55 | 100 | 32 | 100 | plain bore | 135 | 22 | 45 | M8 | 20 | 38 |
| LWKX-TPA 101XKF-ZAX51 | LWKX-TPA 101XKF-FI-ZAX51 | 100 | 32 | 100 | ball bearing (C) | 135 | 18 | 62 | M6 | 30 | 38 |
| LWKX-TPA 101XKF-ZAX55 | LWKX-TPA 101XKF-FI-ZAX55 | 100 | 32 | 100 | ball bearing (C) | 135 | 22 | 45 | M8 | 20 | 38 |
| LWKX-TPA 126G-ZAX51 | LWKX-TPA 126G-FI-ZAX51 | 125 | 32 | 110 | plain bore | 160 | 18 | 62 | M6 | 30 | 40 |
| LWKX-TPA 126G-ZAX55 | LWKX-TPA 126G-FI-ZAX55 | 125 | 32 | 110 | plain bore | 160 | 22 | 45 | M8 | 20 | 40 |
| LWKX-TPA 126XKF-ZAX51 | LWKX-TPA 126XKF-FI-ZAX51 | 125 | 32 | 110 | ball bearing (C) | 160 | 18 | 62 | M6 | 30 | 40 |
| LWKX-TPA 126XKF-ZAX55 | LWKX-TPA 126XKF-FI-ZAX55 | 125 | 32 | 110 | ball bearing (C) | 160 | 22 | 45 | M8 | 20 | 40 |

Additional stem fitting dimensions available upon request

Versions / options



| | plain bore version | electrically-conductive version, non-marking, grey | brake lever in special colour |
|----------------------------|--------------------|--|-------------------------------|
| Technical description page | | 50 | |
| Product code suffix | | LWKXE-...-ELS | |
| Available for | | all ball bearing versions* | upon request |

* Load capacity of electrically conductive version reduced by 35%

LWGX-TPA series

Blickle WAVE synthetic castors, corrosion-resistant, with bolt hole, colour silver grey, wheel with thermoplastic rubber tread



100–110 kg

-20 °C to +60 °C

Bracket: LWGX series

- high-quality nylon 6, impact resistant
- moulded corrosion-resistant grooved ball bearing in the swivel head sealed on both sides
- bolt hole
- colour silver grey RAL 7001
- all parts including axle material are corrosion-resistant
- modern, appealing design

Wheel: TPA series

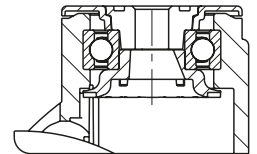
- tread: high-quality thermoplastic rubber-elastomer (TPE), hardness 85 Shore A, colour grey, non-marking, oil containing
- wheel centre: high-quality polypropylene, impact resistant, colour silver grey RAL 7001

Other features:

- the load capacity reduces at ambient temperatures above +30 °C

Additional details:

- bracket series: page 88
- brakes: page 112–113
- wheel series: page 60
- bearing types: page 84–85



| Swivel castors | Swivel castors with "stop-fix" brake | Wheel Ø [mm] | Wheel width [mm] | Load capacity [kg] | Bearing type | Total height [mm] | Plate Ø [mm] | Bolt hole Ø [mm] | Offset swivel castor [mm] |
|--------------------|--------------------------------------|-----------------|---------------------|-----------------------|------------------|----------------------|-----------------|---------------------|------------------------------|
| LWGX-TPA 101G | LWGX-TPA 101G-FI | 100 | 32 | 100 | plain bore | 135 | 55 | 13 | 38 |
| LWGX-TPA 101G-11 | LWGX-TPA 101G-11-FI | 100 | 32 | 100 | plain bore | 135 | 55 | 11 | 38 |
| LWGX-TPA 101XKF | LWGX-TPA 101XKF-FI | 100 | 32 | 100 | ball bearing (C) | 135 | 55 | 13 | 38 |
| LWGX-TPA 101XKF-11 | LWGX-TPA 101XKF-11-FI | 100 | 32 | 100 | ball bearing (C) | 135 | 55 | 11 | 38 |
| LWGX-TPA 126G | LWGX-TPA 126G-FI | 125 | 32 | 110 | plain bore | 160 | 55 | 13 | 40 |
| LWGX-TPA 126G-11 | LWGX-TPA 126G-11-FI | 125 | 32 | 110 | plain bore | 160 | 55 | 11 | 40 |
| LWGX-TPA 126XKF | LWGX-TPA 126XKF-FI | 125 | 32 | 110 | ball bearing (C) | 160 | 55 | 13 | 40 |
| LWGX-TPA 126XKF-11 | LWGX-TPA 126XKF-11-FI | 125 | 32 | 110 | ball bearing (C) | 160 | 55 | 11 | 40 |

Versions / options *



| | plain bore version | electrically-conductive version, non-marking, grey | with threaded pin made from stainless steel M10 x 20 | with threaded pin made from stainless steel M12 x 20 | with synthetic expander fitting | brake lever in special colour |
|----------------------------|--------------------|--|--|--|-----------------------------------|-------------------------------|
| Technical description page | | 50 | 104 | 104 | 105 | |
| Product code suffix | | LWGXE-...-ELS | -GSX10 | -GSX12 | see page 168 | |
| Available for | | all ball bearing versions** | all with bolt hole Ø 13 mm | all with bolt hole Ø 13 mm | bolt hole Ø 11 mm upon request*** | upon request |

* Other versions / options: buffers AW / AG / ARG series; rotating buffers -AMWX / -AMGX series see page 169 (technical information on page 116)

** Load capacity of electrically conductive version reduced by 35%

*** Not for electrically conductive version; Total height +3 mm

LWGX-TPA series

Blickle WAVE synthetic castors, corrosion-resistant, with top plate, colour silver grey, wheel with thermoplastic rubber tread



100–110 kg

-20 °C to +60 °C

Bracket: LWGX series

- high-quality nylon 6, impact resistant
- moulded corrosion-resistant grooved ball bearing in the swivel head sealed on both sides
- with top plate fitting made of stainless steel
- colour silver grey RAL 7001
- all parts including axle material are corrosion-resistant
- modern, appealing design

Wheel: TPA series

- tread: high-quality thermoplastic rubber-elastomer (TPE), hardness 85 Shore A, colour grey, non-marking, oil containing
- wheel centre: high-quality polypropylene, impact resistant, colour silver grey RAL 7001

Other features:

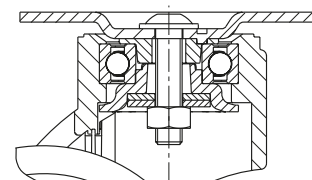
- the load capacity reduces at ambient temperatures above +30 °C

Additional details:

- bracket series: page 89
- brakes: page 112–113
- wheel series: page 60
- bearing types: page 84–85



2



| Swivel castors | Swivel castors with "stop-fix" brake | Wheel Ø [mm] | Wheel width [mm] | Load capacity [kg] | Bearing type | Total height [mm] | Plate size [mm] | Bolt hole spacing [mm] | Bolt hole Ø [mm] | Offset swivel castor [mm] |
|----------------------|--------------------------------------|-----------------|---------------------|-----------------------|------------------|----------------------|--------------------|---------------------------|---------------------|------------------------------|
| LWGX-TPA 101G-PX25 | LWGX-TPA 101G-FI-PX25 | 100 | 32 | 100 | plain bore | 138 | 90 x 66 | 75 x 45 / 61 x 51 | 8.5 | 38 |
| LWGX-TPA 101XKF-PX25 | LWGX-TPA 101XKF-FI-PX25 | 100 | 32 | 100 | ball bearing (C) | 138 | 90 x 66 | 75 x 45 / 61 x 51 | 8.5 | 38 |
| LWGX-TPA 126G-PX25 | LWGX-TPA 126G-FI-PX25 | 125 | 32 | 110 | plain bore | 163 | 90 x 66 | 75 x 45 / 61 x 51 | 8.5 | 40 |
| LWGX-TPA 126XKF-PX25 | LWGX-TPA 126XKF-FI-PX25 | 125 | 32 | 110 | ball bearing (C) | 163 | 90 x 66 | 75 x 45 / 61 x 51 | 8.5 | 40 |

Versions / options



| | plain bore version | electrically-conductive version, non-marking, grey | with plate size 90x66 mm 75x50 mm | brake lever in special colour |
|----------------------------|--------------------|--|-----------------------------------|-------------------------------|
| Technical description page | | 50 | 106 | |
| Product code suffix | | LWGXE-...-ELS | -PX26 | |
| Available for | | all ball bearing versions* | upon request** | upon request |

* Load capacity of electrically conductive version reduced by 35%
 ** In accordance with DIN 18867-8 (large-scale catering equipment)

LWGX-TPA series

Blickle WAVE synthetic castors, corrosion-resistant, with stem, colour silver grey, wheel with thermoplastic rubber tread



100–110 kg

-20 °C to +60 °C

Bracket: LWGX series

- high-quality nylon 6, impact resistant
- moulded corrosion-resistant grooved ball bearing in the swivel head sealed on both sides
- with stainless steel plug-in stem, bolted and secured
- colour silver grey RAL 7001
- all parts including axle material are corrosion-resistant
- modern, appealing design

Wheel: TPA series

- tread: high-quality thermoplastic rubber-elastomer (TPE), hardness 85 Shore A, colour grey, non-marking, oil containing
- wheel centre: high-quality polypropylene, impact resistant, colour silver grey RAL 7001

Other features:

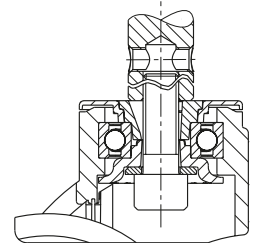
- the load capacity reduces at ambient temperatures above +30 °C

Additional details:

- bracket series: page 89
- brakes: page 112–113
- wheel series: page 60
- bearing types: page 84–85



2



| Swivel castors | Swivel castors with "stop-fix" brake | Wheel Ø [mm] | Wheel width [mm] | Load capacity [kg] | Bearing type | Total height [mm] | Stem Ø [mm] | Stem length [mm] | Ø cross hole [mm] | Position cross hole (H) [mm] | Offset swivel castor [mm] |
|-----------------------|--------------------------------------|-----------------|---------------------|-----------------------|------------------|----------------------|----------------|---------------------|----------------------|------------------------------|------------------------------|
| LWGX-TPA 101G-ZAX51 | LWGX-TPA 101G-FI-ZAX51 | 100 | 32 | 100 | plain bore | 135 | 18 | 62 | M6 | 30 | 38 |
| LWGX-TPA 101G-ZAX55 | LWGX-TPA 101G-FI-ZAX55 | 100 | 32 | 100 | plain bore | 135 | 22 | 45 | M8 | 20 | 38 |
| LWGX-TPA 101XKF-ZAX51 | LWGX-TPA 101XKF-FI-ZAX51 | 100 | 32 | 100 | ball bearing (C) | 135 | 18 | 62 | M6 | 30 | 38 |
| LWGX-TPA 101XKF-ZAX55 | LWGX-TPA 101XKF-FI-ZAX55 | 100 | 32 | 100 | ball bearing (C) | 135 | 22 | 45 | M8 | 20 | 38 |
| LWGX-TPA 126G-ZAX51 | LWGX-TPA 126G-FI-ZAX51 | 125 | 32 | 110 | plain bore | 160 | 18 | 62 | M6 | 30 | 40 |
| LWGX-TPA 126G-ZAX55 | LWGX-TPA 126G-FI-ZAX55 | 125 | 32 | 110 | plain bore | 160 | 22 | 45 | M8 | 20 | 40 |
| LWGX-TPA 126XKF-ZAX51 | LWGX-TPA 126XKF-FI-ZAX51 | 125 | 32 | 110 | ball bearing (C) | 160 | 18 | 62 | M6 | 30 | 40 |
| LWGX-TPA 126XKF-ZAX55 | LWGX-TPA 126XKF-FI-ZAX55 | 125 | 32 | 110 | ball bearing (C) | 160 | 22 | 45 | M8 | 20 | 40 |

Additional stem fitting dimensions available upon request

Versions / options



| | plain bore version | electrically-conductive version, non-marking, grey | brake lever in special colour |
|----------------------------|--------------------|--|-------------------------------|
| Technical description page | | 50 | |
| Product code suffix | | LWGXE-...-ELS | |
| Available for | | all ball bearing versions* | upon request |

* Load capacity of electrically conductive version reduced by 35%

2 Versions / options for Blickle WAVE synthetic castors

“central-stop” central brake with stem

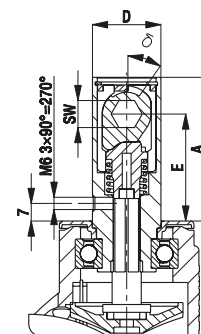
| Product code suffix | Stem height | Operating angle | Stem Ø | Clearance between top plate and centre of hexagon | Width across flats |
|---------------------|-------------|-----------------|----------|---|--------------------|
| | (A) [mm] | (Ø) | (D) [mm] | (E) [mm] | (SW) [mm] |
| -CS11 | 58.5 | 35 ° | 28 | 43.5 | 11 |

This brake system provides friction-locking for the swivel head and wheel. It is actuated using a central lever that connects to the brake linkage on the unit.

The advantages at a glance:

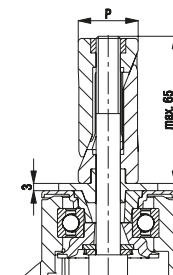
- Small operating angle with little force required to actuate and release the brake.
- Space-saving design with brake mechanism integrated into the zinc-plated stem, blue-passivated, Cr6-free.
- Central actuation of two to four castors possible using brake linkage. This provides a high level of flexibility in terms of how the brake lever is designed and positioned.
- The friction-locking ensures that the brake is not damaged if the brake forces are exceeded.

Available for all Blickle WAVE synthetic castors (with the exception of the corrosion-resistant version).



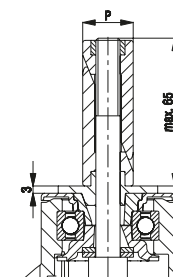
Synthetic expander fitting for round tubes

| Product code suffix | Product code suffix corrosion-resistant version | Internal tube dimension (P) [mm] | Available for all Blickle WAVE synthetic castors with bolt hole Ø 11 mm with the exception of the electrically conductive version. Castor and expander secured to prevent loosening with positive locking. Maximum fitting length is 65 mm. Increases total height of castors by 3 mm. Detailed description: page 105 |
|---------------------|---|----------------------------------|---|
| -ER52 | -EXR52 | Ø 20–25 | |
| -ER53 | -EXR53 | Ø 25–30 | |
| -ER54 | -EXR54 | Ø 30–35 | |
| -ER55 | -EXR55 | Ø 35–40 | |



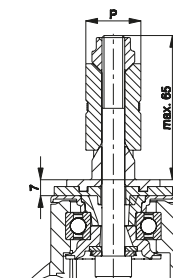
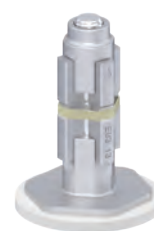
Synthetic expander fitting for square tubes

| Product code suffix | Product code suffix corrosion-resistant version | Internal tube dimension (P) [mm] | Available for all Blickle WAVE synthetic castors with bolt hole Ø 11 mm with the exception of the electrically conductive version. Castor and expander secured to prevent loosening with positive locking. Maximum fitting length is 65 mm. Increases total height of castors by 3 mm. Detailed description: page 105 |
|---------------------|---|----------------------------------|--|
| -EV52 | -EXV52 | □ 18–21 | |
| -EV53 | -EXV53 | □ 21–25 | |
| -EV54 | -EXV54 | □ 25–29 | |
| -EV55 | -EXV55 | □ 29–32 | |
| -EV57 | -EXV57 | □ 32–38.5 | |



Metal expander fitting for round and square tubes

| Product code suffix | Internal tube dimension round tube (P) [mm] | Internal tube dimension square tube (P) [mm] | Available for all Blickle WAVE synthetic castors with bolt hole Ø 11 mm with the exception of the corrosion-resistant version. Castor and expander secured to prevent loosening with positive locking. Maximum fitting length is 65 mm. Increases total height of castors by 7 mm. Detailed description: page 105 |
|---------------------|---|--|--|
| -E51 | Ø 17–19 | □ 17–19 | |
| -E52 | Ø 20–25 | □ 18–21 | |
| -E53 | Ø 25–30 | □ 21–25 | |
| -E54 | Ø 30–35 | □ 25–29 | |
| -E55 | Ø 35–40 | □ 29–32 | |
| -E57 | Ø 39–45 | □ 32–38.5 | |



Versions / options for Blickle WAVE synthetic castors

Buffers for round and square tubes

| Product code Synthetic (Polyethylene) | Product code Solid rubber | Wheel Ø (D) [mm] | Wheel width (T1) [mm] | Hole (d) [mm] |
|---|------------------------------|---------------------|--------------------------|------------------|
| Colour grey white | | | | |
| AW 100/R25 | | 100 | 17.5 | Ø 25 |
| AW 100/V25 | | 100 | 17.5 | □ 25 x 25 |
| AW 125/R25 | | 125 | 17.5 | Ø 25 |
| AW 125/V25 | | 125 | 17.5 | □ 25 x 25 |
| Colour silver grey | | | | |
| AG 100/R25 | | 100 | 17.5 | Ø 25 |
| AG 100/V25 | | 100 | 17.5 | □ 25 x 25 |
| AG 125/R25 | | 125 | 17.5 | Ø 25 |
| AG 125/V25 | | 125 | 17.5 | □ 25 x 25 |
| Colour grey | | | | |
| | ARG 75/R10 | 75 | 23 | Ø 10 |
| | ARG 100/R26 | 100 | 23 | Ø 26 |
| | ARG 100/R32 | 100 | 23 | Ø 32 |
| | ARG 125/R26 | 125 | 23 | Ø 26 |
| | ARG 125/R32 | 125 | 23 | Ø 32 |

Buffers reduce the risk of damage to walls and vehicles in the event of a collision. Buffers for round and square tubes are fixed or connected to tubular frames in the external areas of vehicles.

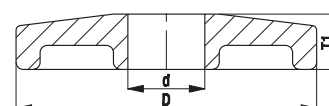
AW/AG series:

Made from soft synthetic polyethylene, hardness 48 Shore D, non-marking, colour grey white RAL 9002 (**AW**) or colour silver grey RAL 7001 (**AG**).

ARG series:

Made from solid rubber, hardness 75 Shore A, colour grey (similar to RAL 7001), non-marking.

Detailed description: Page 116



Synthetic rotating buffers (polyethylene)

| Product code suffix Zinc-plated bolt | Product code suffix Corrosion-resistant bolt | Wheel Ø (D) [mm] | Wheel width (T1) [mm] | Threaded pin (Ø x height) (d x Q) [mm] |
|---|--|---------------------|--------------------------|--|
| Colour grey white | | | | |
| -AMW100 | -AMWX100 | 100 | 17.5 | M10 x 27 |
| -AMW125 | -AMWX125 | 125 | 17.5 | M10 x 27 |
| Colour silver grey | | | | |
| -AMG100 | -AMGX100 | 100 | 17.5 | M10 x 27 |
| -AMG125 | -AMGX125 | 125 | 17.5 | M10 x 27 |

Other dimensions and special colours available upon request.

Buffers reduce the risk of damage to walls and vehicles in the event of a collision. Rotating buffers prevent grinding against walls in the event of a collision.

-AMW/-AMG series:

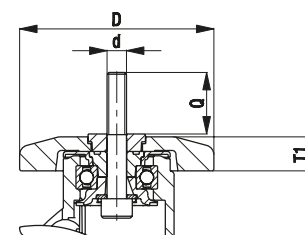
Made of soft polyethylene, hardness 48 Shore D, non-marking, with high strength synthetic plain bore bush, colour grey white RAL 9002 (**-AMW**) or colour silver grey RAL 7001 (**-AMG**). Buffers are connected directly to the synthetic castors using a zinc-plated (**-AMW/-AMG**) or corrosion-resistant (**-AMWX/-AMGX**) DIN 912 bolt.

Synthetic castors with rotating buffers are fitted to the unit with the protruding bolt (threaded pin).

Available for all Blickle WAVE synthetic castors with Ø 11 mm bolt hole.

Increases total height of castors by 9 mm.

Detailed description: page 116



LKDG-PUA series

**Twin synthetic castors,
colour light grey, wheels with
thermoplastic polyurethane tread**

110 kg

-20 °C to +70 °C



Bracket: LKDG series

- high-quality nylon 6, impact resistant
- high-quality synthetic plain bore in the swivel head
- zinc-plated steel threaded pin
- colour light grey RAL 7035

Wheel: PUA series

- tread: high-quality thermoplastic polyurethane (TPU), hardness 92 Shore A, colour black, non-marking, non-staining
- wheel centre: high-quality nylon 6, impact resistant, colour light grey RAL 7035

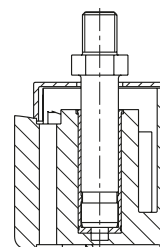
Other features:

- operating temperature: temporarily up to +80 °C
- the load capacity reduces at ambient temperatures above +30 °C

Additional details:

- bracket series: page 89
- brakes: page 112–113
- bearing types: page 84–85

**BLICKLE
DESIGN LINE**



2



| Swivel castors | Swivel castors with "Radstop" brake | Wheel Ø [mm] | Wheel width [mm] | Total castor width [mm] | Load capacity [kg] | Bearing type | Total height incl. hexagon [mm] | Threaded pin [mm] | Offset swivel castor [mm] |
|----------------|-------------------------------------|-----------------|---------------------|----------------------------|-----------------------|--------------|------------------------------------|----------------------|------------------------------|
| LKDG-PUA 100G | LKDG-PUA 100G-RA | 100 | 2 x 19 | 63 | 110 | plain bore | 121 | M12 x 20 | 33 |

Versions / options



| | with zinc-plated steel top plate fitting 60x60 mm 40x40/46x46 mm | stainless steel version | in special colour |
|----------------------------|--|-------------------------|-------------------|
| Technical description page | 106 | | |
| Product code suffix | -P23 | | |
| Available for | all* | upon request | upon request |

* Total height +2 mm

LKDB-PUA series

**Twin synthetic castors,
colour black, wheels with
thermoplastic polyurethane tread**

50–110 kg

-20 °C to +70 °C



Bracket: LKDB series

- high-quality nylon 6, impact resistant
- high-quality synthetic plain bore in the swivel head
- zinc-plated steel threaded pin
- colour black RAL 9005

Wheel: PUA series

- tread: high-quality thermoplastic polyurethane (TPU), hardness 92 Shore A, colour black, non-marking, non-staining
- wheel centre: high-quality nylon 6, impact resistant, colour black RAL 9005

Other features:

- operating temperature: temporarily up to +80 °C
- the load capacity reduces at ambient temperatures above +30 °C

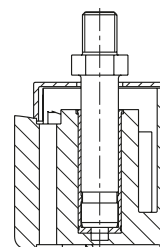
Additional details:

- bracket series: page 89
- brakes: page 112–113
- bearing types: page 84–85



**BLICKLE
DESIGN LINE**

2



| Swivel castors | Swivel castors with "Radstop" brake | Wheel Ø [mm] | Wheel width [mm] | Total castor width [mm] | Load capacity [kg] | Bearing type | Total height incl. hexagon [mm] | Threaded pin [mm] | Offset swivel castor [mm] |
|----------------|-------------------------------------|-----------------|---------------------|----------------------------|-----------------------|--------------|------------------------------------|----------------------|------------------------------|
| LKDB-PUA 50G | LKDB-PUA 50G-RA | 50 | 2 x 12 | 51 | 50 | plain bore | 61 | M8 x 15 | 20 |
| LKDB-PUA 75G | LKDB-PUA 75G-RA | 75 | 2 x 15 | 55 | 75 | plain bore | 83 | M10 x 15 | 24 |
| LKDB-PUA 100G | LKDB-PUA 100G-RA | 100 | 2 x 19 | 63 | 110 | plain bore | 121 | M12 x 20 | 33 |

Castors are not approved for office chairs.

Versions / options



| image LKDB-PUA 50G-RA | electrically conductive version, colour black, non-marking, hardness 98 Shore A | with plug-in pin Ø 11 x 19.5 | with zinc-plated steel top plate fitting 38x38 mm 25x25/27x27 mm | with zinc-plated steel top plate fitting 60x60 mm 40x40/46x46 mm | stainless steel version | in special colour |
|----------------------------|---|------------------------------|--|--|-------------------------|-------------------|
| Technical description page | 50 | 105 | 106 | 106 | | |
| Product code suffix | -ELS | -ES | -P20 | -P23 | | |
| Available for | all | wheel Ø 50–75 mm* | wheel Ø 50–75 mm** | wheel Ø 75–100 mm*** | upon request | upon request |

* Total height -3 mm

** Total height +5 mm

*** Total height wheel Ø 75 +5 mm, wheel Ø 100 +2 mm

LKD-PATH series

Blickle MOVE twin synthetic castors with bolt hole, colour grey white, wheel with thermoplastic polyurethane tread



100–125 kg

-20 °C to +60 °C

Bracket: LKD series

- high-quality nylon 6, impact resistant
- two grooved ball bearings in the swivel head sealed on both sides
- bolt hole
- colour grey white RAL 9002
- modern, appealing design

Wheel: PATH series

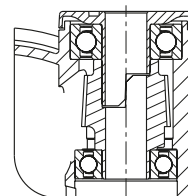
- tread: high-quality thermoplastic polyurethane (TPU), hardness 94 Shore A, colour dark grey, non-marking, non-staining
- wheel centre: high-quality nylon 6, impact resistant, colour grey white RAL 9002

Other features:

- the load capacity reduces at ambient temperatures above +30 °C

Additional details:

- bracket series: page 89
- brakes: page 112–113
- wheel series: page 61
- bearing types: page 84–85



| Swivel castors | Swivel castors with "stop-fix" brake | Wheel Ø [mm] | Wheel width [mm] | Total castor width [mm] | Load capacity [kg] | Bearing type | Total height [mm] | Plate Ø [mm] | Bolt hole Ø [mm] | Offset swivel castor [mm] |
|------------------|--------------------------------------|--------------|------------------|-------------------------|--------------------|--------------|-------------------|--------------|------------------|---------------------------|
| LKD-PATH 100K | LKD-PATH 100K-FI | 100 | 2 x 18 | 71 | 100 | ball bearing | 103 | 42 | 13 | 31 |
| LKD-PATH 100K-11 | LKD-PATH 100K-11-FI | 100 | 2 x 18 | 71 | 100 | ball bearing | 103 | 42 | 11 | 31 |
| LKD-PATH 100K-9 | LKD-PATH 100K-9-FI | 100 | 2 x 18 | 71 | 100 | ball bearing | 103 | 42 | 9 | 31 |
| LKD-PATH 125K | LKD-PATH 125K-FI | 125 | 2 x 20 | 80 | 125 | ball bearing | 130 | 45 | 13 | 40 |
| LKD-PATH 125K-11 | LKD-PATH 125K-11-FI | 125 | 2 x 20 | 80 | 125 | ball bearing | 130 | 45 | 11 | 40 |

For corrosion-resistant versions of twin synthetic castors, see page 176

Swivel castor with "stop-fix" brake with easy release kick lever as standard



Versions / options *



| | electrically-conductive version, non-marking grey | with combined wheel brake and directional lock (1 x 360°) | castor with special mounting height 121 / 135 mm | with threaded pin M10 x 20 M12 x 20 | wheel Ø 150 mm | with top plate fitting | in special colour |
|----------------------------|---|---|--|-------------------------------------|----------------|------------------------|-------------------|
| Technical description page | 50 | 115 | | 104 | | 106 | |
| Product code suffix | -ELS | -RIFI | LKDH-... | -GS10 / -GS12 | | -P25 / -P26 | |
| Available for | all | wheel Ø 125 mm | wheel Ø 100 / 125 mm | all with bolt hole Ø 13 mm | upon request | upon request** | upon request |

* Other versions / options: expander fitting for all castors with bolt hole Ø 11 mm upon request (with exception of LKDH version), total height +5 mm, see page 180

** Increases total height of castors by 8 mm

LKD-PATH series

Blickle MOVE twin synthetic castors with stem, colour grey white, wheel with thermoplastic polyurethane tread



100–125 kg

-20 °C to +60 °C

Bracket: LKD series

- high-quality nylon 6, impact resistant
- two grooved ball bearings in the swivel head sealed on both sides
- zinc-plated, blue-passivated steel plug-in stem (Cr6-free), bolted and secured
- colour grey white RAL 9002
- modern, appealing design

Wheel: PATH series

- tread: high-quality thermoplastic polyurethane (TPU), hardness 94 Shore A, colour dark grey, non-marking, non-staining
- wheel centre: high-quality nylon 6, impact resistant, colour grey white RAL 9002

Other features:

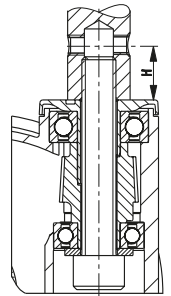
- the load capacity reduces at ambient temperatures above +30 °C

Additional details:

- bracket series: page 90
- brakes: page 112–113
- wheel series: page 61
- bearing types: page 84–85



BLICKLE DESIGN LINE



2

| Swivel castors | Swivel castors with "stop-fix" brake | Wheel Ø [mm] | Wheel width [mm] | Total castor width [mm] | Load capacity [kg] | Bearing type | Total height [mm] | Stem Ø [mm] | Stem length [mm] | Ø cross hole [mm] | Position cross hole (H) [mm] | Offset swivel castor [mm] |
|--------------------|--------------------------------------|--------------|------------------|-------------------------|--------------------|--------------|-------------------|-------------|------------------|-------------------|------------------------------|---------------------------|
| LKD-PATH 100K-ZA51 | LKD-PATH 100K-FI-ZA51 | 100 | 2 x 18 | 71 | 100 | ball bearing | 103 | 18 | 62 | M6 | 30 | 31 |
| LKD-PATH 100K-ZA55 | LKD-PATH 100K-FI-ZA55 | 100 | 2 x 18 | 71 | 100 | ball bearing | 103 | 22 | 45 | M8 | 20 | 31 |
| LKD-PATH 125K-ZA51 | LKD-PATH 125K-FI-ZA51 | 125 | 2 x 20 | 80 | 125 | ball bearing | 130 | 18 | 62 | M6 | 30 | 40 |
| LKD-PATH 125K-ZA55 | LKD-PATH 125K-FI-ZA55 | 125 | 2 x 20 | 80 | 125 | ball bearing | 130 | 22 | 45 | M8 | 20 | 40 |

For corrosion-resistant versions of twin synthetic castors, see page 177
Swivel castor with "stop-fix" brake with easy release kick lever as standard



Versions / options



| | electrically conductive version, non-marking grey | with combined wheel brake and directional lock (1 x 360°) | castor with special mounting height 121 / 135 mm | wheel Ø 150 mm | in special colour |
|----------------------------|---|---|--|----------------|-------------------|
| Technical description page | 50 | 115 | | | |
| Product code suffix | -ELS | -RIFI | LKDH-... | | |
| Available for | all | wheel Ø 125 mm | wheel Ø 100 / 125 mm | upon request | upon request |

LKDG-PATH series

Blickle MOVE twin synthetic castors with bolt hole, colour silver grey, wheel with thermoplastic polyurethane tread



100–125 kg

-20 °C to +60 °C

Bracket: LKDG series

- high-quality nylon 6, impact resistant
- two grooved ball bearings in the swivel head sealed on both sides
- bolt hole
- colour silver grey RAL 7001
- modern, appealing design

Wheel: PATH series

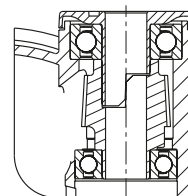
- tread: high-quality thermoplastic polyurethane (TPU), hardness 94 Shore A, colour dark grey, non-marking, non-staining
- wheel centre: high-quality nylon 6, impact resistant, colour silver grey RAL 7001

Other features:

- the load capacity reduces at ambient temperatures above +30 °C

Additional details:

- bracket series: page 89
- brakes: page 112–113
- wheel series: page 61
- bearing types: page 84–85



| Swivel castors | Swivel castors with "stop-fix" brake | Wheel Ø [mm] | Wheel width [mm] | Total castor width [mm] | Load capacity [kg] | Bearing type | Total height [mm] | Plate Ø [mm] | Bolt hole Ø [mm] | Offset swivel castor [mm] |
|-------------------|--------------------------------------|-----------------|---------------------|----------------------------|-----------------------|--------------|----------------------|-----------------|---------------------|------------------------------|
| LKDG-PATH 100K | LKDG-PATH 100K-FI | 100 | 2 x 18 | 71 | 100 | ball bearing | 103 | 42 | 13 | 31 |
| LKDG-PATH 100K-11 | LKDG-PATH 100K-11-FI | 100 | 2 x 18 | 71 | 100 | ball bearing | 103 | 42 | 11 | 31 |
| LKDG-PATH 100K-9 | LKDG-PATH 100K-9-FI | 100 | 2 x 18 | 71 | 100 | ball bearing | 103 | 42 | 9 | 31 |
| LKDG-PATH 125K | LKDG-PATH 125K-FI | 125 | 2 x 20 | 80 | 125 | ball bearing | 130 | 45 | 13 | 40 |
| LKDG-PATH 125K-11 | LKDG-PATH 125K-11-FI | 125 | 2 x 20 | 80 | 125 | ball bearing | 130 | 45 | 11 | 40 |

For corrosion-resistant versions of twin synthetic castors, see page 178

Swivel castor with "stop-fix" brake with easy release kick lever as standard



Versions / options *



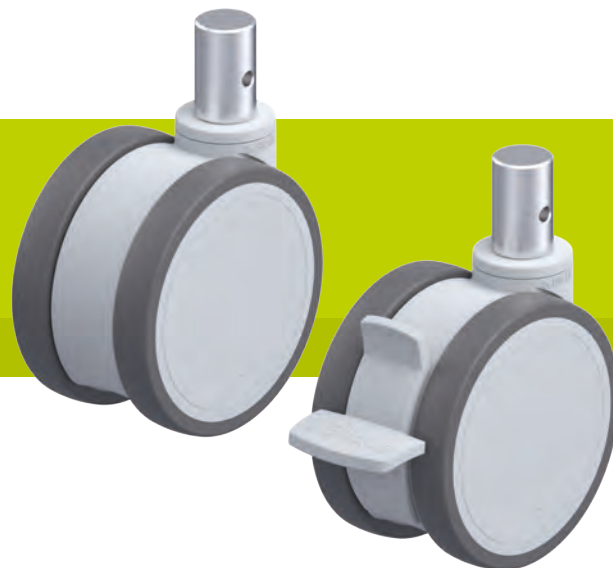
| | electrically conductive version, non-marking | with combined wheel brake and directional lock (1 x 360°) | castor with special mounting height 121 / 135 mm | with threaded pin M10 x 20 M12 x 20 | wheel Ø 150 mm | with top plate fitting | in special colour |
|----------------------------|--|---|--|-------------------------------------|----------------|------------------------|-------------------|
| Technical description page | 50 | 115 | | 104 | | 106 | |
| Product code suffix | -ELS | -RIFI | LKDGH-... | -GS10 / -GS12 | | -P25 / -P26 | |
| Available for | all | wheel Ø 125 mm | wheel Ø 100 / 125 mm | all with bolt hole Ø 13 mm | upon request | upon request** | upon request |

* Other versions / options: expander fitting for all castors with bolt hole Ø 11 mm upon request (with exception of LKDGH version), total height +5 mm, see page 180

** Increases total height of castors by 8 mm

LKDG-PATH series

Blickle MOVE twin synthetic castors with stem, colour silver grey, wheel with thermoplastic polyurethane tread



100–125 kg

-20 °C to +60 °C

Bracket: LKDG series

- high-quality nylon 6, impact resistant
- two grooved ball bearings in the swivel head sealed on both sides
- zinc-plated, blue-passivated steel plug-in stem (Cr6-free), bolted and secured
- colour silver grey RAL 7001
- modern, appealing design

Wheel: PATH series

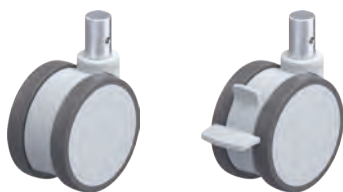
- tread: high-quality thermoplastic polyurethane (TPU), hardness 94 Shore A, colour dark grey, non-marking, non-staining
- wheel centre: high-quality nylon 6, impact resistant, colour silver grey RAL 7001

Other features:

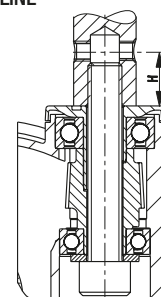
- the load capacity reduces at ambient temperatures above +30 °C

Additional details:

- bracket series: page 89
- brakes: page 112–113
- wheel series: page 61
- bearing types: page 84–85



BLICKLE DESIGN LINE



2

| Swivel castors | Swivel castors with "stop-fix" brake | Wheel Ø [mm] | Wheel width [mm] | Total castor width [mm] | Load capacity [kg] | Bearing type | Total height [mm] | Stem Ø [mm] | Stem length [mm] | Ø cross hole [mm] | Position cross hole (H) [mm] | Offset swivel castor [mm] |
|---------------------|--------------------------------------|--------------|------------------|-------------------------|--------------------|--------------|-------------------|-------------|------------------|-------------------|------------------------------|---------------------------|
| LKDG-PATH 100K-ZA51 | LKDG-PATH 100K-FI-ZA51 | 100 | 2 x 18 | 71 | 100 | ball bearing | 103 | 18 | 62 | M6 | 30 | 31 |
| LKDG-PATH 100K-ZA55 | LKDG-PATH 100K-FI-ZA55 | 100 | 2 x 18 | 71 | 100 | ball bearing | 103 | 22 | 45 | M8 | 20 | 31 |
| LKDG-PATH 125K-ZA51 | LKDG-PATH 125K-FI-ZA51 | 125 | 2 x 80 | 80 | 125 | ball bearing | 130 | 18 | 62 | M6 | 30 | 40 |
| LKDG-PATH 125K-ZA55 | LKDG-PATH 125K-FI-ZA55 | 125 | 2 x 80 | 80 | 125 | ball bearing | 130 | 22 | 45 | M8 | 20 | 40 |

For corrosion-resistant versions of twin synthetic castors, see page 179
Swivel castor with "stop-fix" brake with easy release kick lever as standard



Versions / options



| | electrically conductive version, non-marking grey | with combined wheel brake and directional lock (1 x 360°) | castor with special mounting height 121 / 135 mm | wheel Ø 150 mm | in special colour |
|----------------------------|---|---|--|----------------|-------------------|
| Technical description page | 50 | 115 | | | |
| Product code suffix | -ELS | -RIFI | LKDGH-... | | |
| Available for | all | wheel Ø 125 mm | wheel Ø 100 / 125 mm | upon request | upon request |

LKDX-PATH series

Blickle MOVE twin synthetic castors, corrosion-resistant, with bolt hole, colour grey white, wheel with thermoplastic polyurethane tread



100–125 kg

-20 °C to +60 °C

Bracket: LKDX series

- high-quality nylon 6, impact resistant
- two corrosion-resistant grooved ball bearings in swivel head sealed on both sides
- bolt hole
- colour grey white RAL 9002
- all parts including axle material are corrosion-resistant
- modern, appealing design

Wheel: PATH series

- tread: high-quality thermoplastic polyurethane (TPU), hardness 94 Shore A, colour dark grey, non-marking, non-staining
- wheel centre: high-quality nylon 6, impact resistant, colour grey white RAL 9002

Other features:

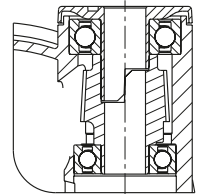
- the load capacity reduces at ambient temperatures above +30 °C

Additional details:

- bracket series: page 90
- brakes: page 112–113
- wheel series: page 61
- bearing types: page 84–85



2



| Swivel castors | Swivel castors with "stop-fix" brake | Wheel Ø [mm] | Wheel width [mm] | Total castor width [mm] | Load capacity [kg] | Bearing type | Total height [mm] | Plate Ø [mm] | Bolt hole Ø [mm] | Offset swivel castor [mm] |
|--------------------|--------------------------------------|-----------------|---------------------|----------------------------|-----------------------|--------------|----------------------|-----------------|---------------------|------------------------------|
| LKDX-PATH 100XK | LKDX-PATH 100XK-FI | 100 | 2 x 18 | 71 | 100 | ball bearing | 103 | 42 | 13 | 31 |
| LKDX-PATH 100XK-11 | LKDX-PATH 100XK-11-FI | 100 | 2 x 18 | 71 | 100 | ball bearing | 103 | 42 | 11 | 31 |
| LKDX-PATH 100XK-9 | LKDX-PATH 100XK-9-FI | 100 | 2 x 18 | 71 | 100 | ball bearing | 103 | 42 | 9 | 31 |
| LKDX-PATH 125XK | LKDX-PATH 125XK-FI | 125 | 2 x 20 | 80 | 125 | ball bearing | 130 | 45 | 13 | 40 |
| LKDX-PATH 125XK-11 | LKDX-PATH 125XK-11-FI | 125 | 2 x 20 | 80 | 125 | ball bearing | 130 | 45 | 11 | 40 |

Swivel castor with "stop-fix" brake with easy release kick lever as standard



Versions / options *



| | electrically conductive version, non-marking | with combined wheel brake and directional lock (1 x 360°) | castor with special mounting height 121 / 135 mm | with threaded pin made from stainless steel M10 x 20 / M12 x 20 | wheel Ø 150 mm | with stainless steel top plate fitting | in special colour |
|----------------------------|--|---|--|---|----------------|--|-------------------|
| Technical description page | 50 | 115 | | 104 | | 106 | |
| Product code suffix | -ELS | -RIFI | LKDXH-... | -GSX10 / -GSX12 | | -PX25 / -PX26 | |
| Available for | all | wheel Ø 125 mm | wheel Ø 100 / 125 mm | all with bolt hole Ø 13 mm | upon request | upon request** | upon request |

* Other versions / options: expander fitting for all castors with bolt hole Ø 11 mm upon request (with exception of LKDXH version), total height +5 mm, see page 180

** Increases total height of castors by 8 mm

LKDX-PATH series

Blickle MOVE twin synthetic castors, corrosion-resistant, with stem, colour grey white, wheel with thermoplastic polyurethane tread



100–125 kg

-20 °C to +60 °C

Bracket: LKDX series

- high-quality nylon 6, impact resistant
- two corrosion-resistant grooved ball bearings in swivel head sealed on both sides
- with stainless steel plug-in stem, bolted and secured
- colour grey white RAL 9002
- all parts including axle material are corrosion-resistant
- modern, appealing design

Wheel: PATH series

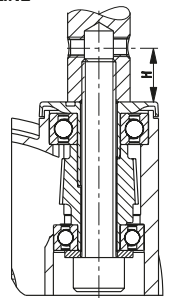
- tread: high-quality thermoplastic polyurethane (TPU), hardness 94 Shore A, colour dark grey, non-marking, non-staining
- wheel centre: high-quality nylon 6, impact resistant, colour grey white RAL 9002

Other features:

- the load capacity reduces at ambient temperatures above +30 °C

Additional details:

- bracket series: page 90
- brakes: page 112–113
- wheel series: page 61
- bearing types: page 84–85



| Swivel castors | Swivel castors with "stop-fix" brake | Wheel Ø [mm] | Wheel width [mm] | Total castor width [mm] | Load capacity [kg] | Bearing type | Total height [mm] | Stem Ø [mm] | Stem length [mm] | Ø cross hole [mm] | Position cross hole (H) [mm] | Offset swivel castor [mm] |
|-----------------------|--------------------------------------|--------------|------------------|-------------------------|--------------------|--------------|-------------------|-------------|------------------|-------------------|------------------------------|---------------------------|
| LKDX-PATH 100XK-ZAX51 | LKDX-PATH 100XK-FI-ZAX51 | 100 | 2 x 18 | 71 | 100 | ball bearing | 103 | 18 | 62 | M6 | 30 | 31 |
| LKDX-PATH 100XK-ZAX55 | LKDX-PATH 100XK-FI-ZAX55 | 100 | 2 x 18 | 71 | 100 | ball bearing | 103 | 22 | 45 | M8 | 20 | 31 |
| LKDX-PATH 125XK-ZAX51 | LKDX-PATH 125XK-FI-ZAX51 | 125 | 2 x 20 | 80 | 125 | ball bearing | 130 | 18 | 62 | M6 | 30 | 40 |
| LKDX-PATH 125XK-ZAX55 | LKDX-PATH 125XK-FI-ZAX55 | 125 | 2 x 20 | 80 | 125 | ball bearing | 130 | 22 | 45 | M8 | 20 | 40 |

Swivel castor with "stop-fix" brake with easy release kick lever as standard



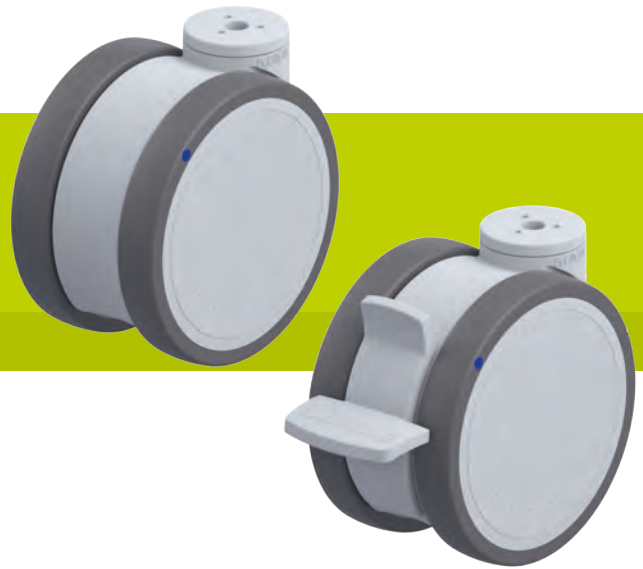
Versions / options



| | electrically conductive version, non-marking | with combined wheel brake and directional lock (1 x 360°) | castor with special mounting height 121 / 135 mm | wheel Ø 150 mm | in special colour |
|----------------------------|--|---|--|----------------|-------------------|
| Technical description page | 50 | 115 | | | |
| Product code suffix | -ELS | -RIFI | LKDXH-... | | |
| Available for | all | wheel Ø 125 mm | wheel Ø 100 / 125 mm | upon request | upon request |

LKDGX-PATH series

Blickle MOVE twin synthetic castors, corrosion-resistant, with bolt hole, colour silver grey, wheel with thermoplastic polyurethane tread



100–125 kg

-20 °C to +60 °C

Bracket: LKDGX series

- high-quality nylon 6, impact resistant
- two corrosion-resistant grooved ball bearings in swivel head sealed on both sides
- bolt hole
- colour silver grey RAL 7001
- all parts including axle material are corrosion-resistant
- modern, appealing design

Wheel: PATH series

- tread: high-quality thermoplastic polyurethane (TPU), hardness 94 Shore A, colour dark grey, non-marking, non-staining
- wheel centre: high-quality nylon 6, impact resistant, colour silver grey RAL 7001

Other features:

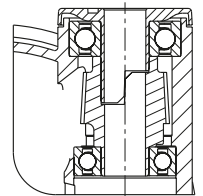
- the load capacity reduces at ambient temperatures above +30 °C

Additional details:

- bracket series: page 90
- brakes: page 112–113
- wheel series: page 61
- bearing types: page 84–85



2



| Swivel castors | Swivel castors with "stop-fix" brake | Wheel Ø [mm] | Wheel width [mm] | Total castor width [mm] | Load capacity [kg] | Bearing type | Total height [mm] | Plate Ø [mm] | Bolt hole Ø [mm] | Offset swivel castor [mm] |
|---------------------|--------------------------------------|-----------------|---------------------|----------------------------|-----------------------|--------------|----------------------|-----------------|---------------------|------------------------------|
| LKDGX-PATH 100XK | LKDGX-PATH 100XK-FI | 100 | 2 x 18 | 71 | 100 | ball bearing | 103 | 42 | 13 | 31 |
| LKDGX-PATH 100XK-11 | LKDGX-PATH 100XK-11-FI | 100 | 2 x 18 | 71 | 100 | ball bearing | 103 | 42 | 11 | 31 |
| LKDGX-PATH 100XK-9 | LKDGX-PATH 100XK-9-FI | 100 | 2 x 18 | 71 | 100 | ball bearing | 103 | 42 | 9 | 31 |
| LKDGX-PATH 125XK | LKDGX-PATH 125XK-FI | 125 | 2 x 20 | 80 | 125 | ball bearing | 130 | 45 | 13 | 40 |
| LKDGX-PATH 125XK-11 | LKDGX-PATH 125XK-11-FI | 125 | 2 x 20 | 80 | 125 | ball bearing | 130 | 45 | 11 | 40 |

Swivel castor with "stop-fix" brake with easy release kick lever as standard



Versions / options *



| | electrically conductive version, non-marking | with combined wheel brake and directional lock (1 x 360°) | castor with special mounting height 121 / 135 mm | with threaded pin made from stainless steel M10 x 20 / M12 x 20 | wheel Ø 150 mm | with stainless steel top plate fitting | in special colour |
|----------------------------|--|---|--|---|----------------|--|-------------------|
| Technical description page | 50 | 115 | | 104 | | 106 | |
| Product code suffix | -ELS | -RIFI | LKDGXH-... | -GSX10 / -GSX12 | | -PX25 / -PX26 | |
| Available for | all | wheel Ø 125 mm | wheel Ø 100 / 125 mm | all with bolt hole Ø 13 mm | upon request | upon request | upon request |

* Other versions / options: expander fitting for all castors with bolt hole Ø 11 mm upon request (with exception of LKDGXH version), total height +5 mm, see page 180

LKDGX-PATH series

Blickle MOVE twin synthetic castors, corrosion-resistant, with stem, colour silver grey, wheel with thermoplastic polyurethane tread



100–125 kg

-20 °C to +60 °C

Bracket: LKDGX series

- high-quality nylon 6, impact resistant
- two corrosion-resistant grooved ball bearings in swivel head sealed on both sides
- with stainless steel plug-in stem, bolted and secured
- colour silver grey RAL 7001
- all parts including axle material are corrosion-resistant
- modern, appealing design

Wheel: PATH series

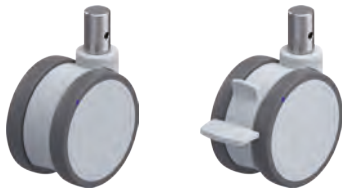
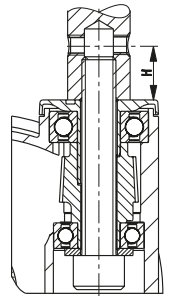
- tread: high-quality thermoplastic polyurethane (TPU), hardness 94 Shore A, colour dark grey, non-marking, non-staining
- wheel centre: high-quality nylon 6, impact resistant, colour silver grey RAL 7001

Other features:

- the load capacity reduces at ambient temperatures above +30 °C

Additional details:

- bracket series: page 90
- brakes: page 112–113
- wheel series: page 61
- bearing types: page 84–85

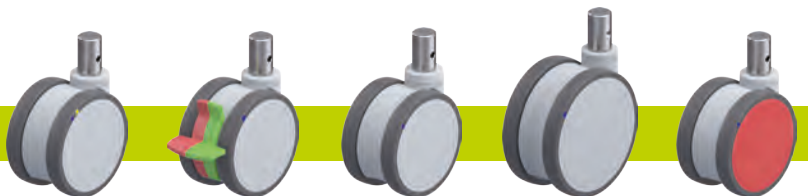


| Swivel castors | Swivel castors with "stop-fix" brake | Wheel Ø [mm] | Wheel width [mm] | Total castor width [mm] | Load capacity [kg] | Bearing type | Total height [mm] | Stem Ø [mm] | Stem length [mm] | Ø cross hole [mm] | Position cross hole (H) [mm] | Offset swivel castor [mm] |
|------------------------|--------------------------------------|--------------|------------------|-------------------------|--------------------|--------------|-------------------|-------------|------------------|-------------------|------------------------------|---------------------------|
| LKDGX-PATH 100XK-ZAX51 | LKDGX-PATH 100XK-FI-ZAX51 | 100 | 2 x 18 | 71 | 100 | ball bearing | 103 | 18 | 62 | M6 | 30 | 31 |
| LKDGX-PATH 100XK-ZAX55 | LKDGX-PATH 100XK-FI-ZAX55 | 100 | 2 x 18 | 71 | 100 | ball bearing | 103 | 22 | 45 | M8 | 20 | 31 |
| LKDGX-PATH 125XK-ZAX51 | LKDGX-PATH 125XK-FI-ZAX51 | 125 | 2 x 20 | 80 | 125 | ball bearing | 130 | 18 | 62 | M6 | 30 | 40 |
| LKDGX-PATH 125XK-ZAX55 | LKDGX-PATH 125XK-FI-ZAX55 | 125 | 2 x 20 | 80 | 125 | ball bearing | 130 | 22 | 45 | M8 | 20 | 40 |

Swivel castor with "stop-fix" brake with easy release kick lever as standard



Versions / options

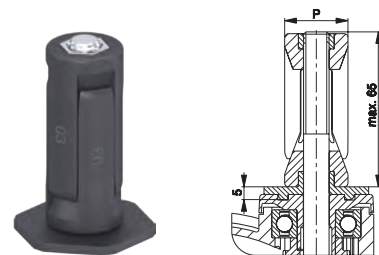


| | electrically conductive version, non-marking | with combined wheel brake and directional lock (1 x 360°) | castor with special mounting height 121 / 135 mm | wheel Ø 150 mm | in special colour |
|----------------------------|--|---|--|----------------|-------------------|
| Technical description page | 50 | 115 | | | |
| Product code suffix | -ELS | -RIFI | LKDGXH-... | | |
| Available for | all | wheel Ø 125 mm | wheel Ø 100 / 125 mm | upon request | upon request |

2 Versions / options for Blickle MOVE twin synthetic castors

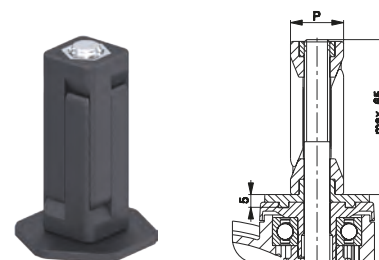
Synthetic expander fitting for round tubes

| Product code suffix | Product code suffix Corrosion-resistant version | Internal tube dimension (P) [mm] | Available for all Blickle MOVE twin synthetic castors with the exception of the electrically conductive version. Castor and expander secured to prevent loosening with positive locking. Maximum fitting length is 65 mm. Increases total height of castors by 5 mm. Detailed description: page 105 |
|---------------------|--|-------------------------------------|---|
| -ER62 | -EXR62 | Ø 20–25 | |
| -ER63 | -EXR63 | Ø 25–30 | |
| -ER64 | -EXR64 | Ø 30–35 | |
| -ER65 | -EXR65 | Ø 35–40 | |



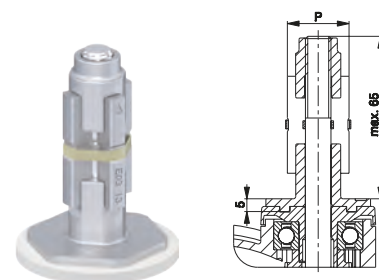
Synthetic expander fitting for square tubes

| Product code suffix | Product code suffix Corrosion-resistant version | Internal tube dimension (P) [mm] | Available for all Blickle MOVE twin synthetic castors with the exception of the electrically conductive version. Castor and expander secured to prevent loosening with positive locking. Maximum fitting length is 65 mm. Increases total height of castors by 5 mm. Detailed description: page 105 |
|---------------------|--|-------------------------------------|---|
| -EV62 | -EXV62 | □ 18–21 | |
| -EV63 | -EXV63 | □ 21–25 | |
| -EV64 | -EXV64 | □ 25–29 | |
| -EV65 | -EXV65 | □ 29–32 | |
| -EV67 | -EXV67 | □ 32–38.5 | |



Metal expander fitting for round and square tubes

| Product code suffix | Internal tube dimension round tube | Internal tube dimension square tube | Available for all Blickle MOVE twin synthetic castors with the exception of the corrosion-resistant version. Castor and expander secured to prevent loosening with positive locking. Maximum fitting length is 65 mm. Increases total height of castors by 5 mm. Detailed description: page 105 |
|---------------------|---------------------------------------|--|---|
| | (P) [mm] | (P) [mm] | |
| -E61 | Ø 17–19 | □ 17–19 | |
| -E62 | Ø 20–25 | □ 18–21 | |
| -E63 | Ø 25–30 | □ 21–25 | |
| -E64 | Ø 30–35 | □ 25–29 | |
| -E65 | Ø 35–40 | □ 29–32 | |
| -E67 | Ø 39–45 | □ 32–38.5 | |



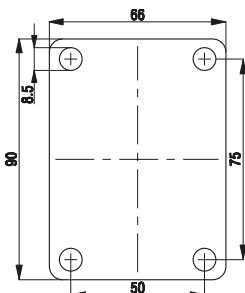
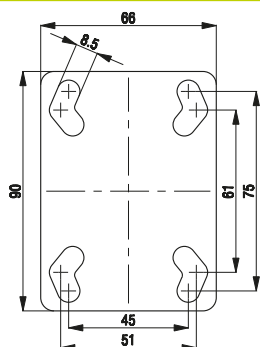
Versions / options for Blickle MOVE twin synthetic castors

Top plate fittings for Blickle MOVE twin synthetic castors

| Product code suffix | Product code suffix Stainless steel version | Plate size [mm] | Bolt hole spacing [mm] | Bolt hole \emptyset [mm] | Top plate fitting in zinc-plated, blue-passivated design (Cr6-free) or corrosion-resistant design. Available upon request. |
|---------------------|---|--------------------|------------------------------|-------------------------------|---|
| -P25 | -PX25 | 90 x 66 | 75 x 45 / 61 x 51 | 8.5 | |
| -P26 | -PX26 | 90 x 66 | 75 x 50 | 8.5 | |

Plate no. 25

Plate no. 26



Stem fitting for Blickle MOVE twin synthetic castors

| Product code suffix | Product code suffix Stainless steel version | Stem \emptyset P [mm] | Stem length Q [mm] | \emptyset Cross hole d [mm] | Position cross hole H [mm] |
|---------------------|---|----------------------------|-----------------------|----------------------------------|----------------------------------|
| -ZA51 | -ZAX51 | 18 | 62 | M6 | 30 |
| -ZA55 | -ZAX55 | 22 | 45 | M8 | 20 |

The castor is fitted using a plug-in stem, which is inserted into a corresponding tube or hole and secured. The stem fitting is fixed to the castor and a fixing bolt (cross hole) or clamp must be used to prevent it rotating or falling out.

The load capacities specified here can only be reached if the top plate of the swivel castor is completely supported by the entire diameter.

A stainless steel plug-in stem fitting is available for corrosion-resistant swivel castors.
The aforementioned dimensions must be taken into consideration when selecting the fitting with a stem.

